

□ Allopathic □ Ayurvedic □ Herbal □ Nutraceuticals □ Cosmetic □ Bio - Technology □ & OTS Products.

# PHARMA

## CITY INDIA



**Taj Pharmaceuticals Ltd.**

[www.tajpharmaceuticals.com](http://www.tajpharmaceuticals.com) / [www.tajfordoctors.com](http://www.tajfordoctors.com)

**Product Index**  
With Price List



# Clinical Trials Market India & Aborad



Regulatory changes and the acceptance of foreign clinical data have fuelled growth of the clinical trial sector in india



R&D ■ Manufacturing ■ Marketing ■ Lab Technology





## **TAJ PHARMACEUTICALS LTD. (ESTD. - 1995)** **Curing lives**

**LIFE:** It is the underlying purpose of every thing we do at **TAJ PHARMACEUTICALS LTD.** Our Company work with an urge and commitment towards development of a distinguished range of branded Pharmaceuticals and in the process, aim at developing medicaments falling under the category of latest molecules as well, in addition to those so far accepted ones.

The manufacturing facilities of Taj pharmaceutical Ltd are USA-FDA, MCA, TGA & WHO-Scheduled 'M' certified by the government of India. The Range of Manufacturing product is quite exhaustive, which comprises of more than 1000 products in the following categories:-

- (I) **DIABETIC CARE PRODUCTS**
- (II) **DELIVERY SYSTEMS**
- (III) **GROWTH HORMONES AND MAJOR THERAPEUTIC SEGMENTS, SUCH AS:**
  - 1) Antibiotics
  - 2) Vitamins
  - 3) Analgesics
  - 4) Dermatological
  - 5) Anti-infective
  - 6) Oncological
  - 7) Food Supplements
  - 8) Antioxidants
  - 9) Calcium Supplements
  - 10) Diuretics
  - 11) Peripheral Vasodilators
  - 12) Ophthalmology
  - 13) Anti-inflammatory
  - 14) Gynaecologicals
  - 15) Antipyretics
  - 16) Cardio-vascular
  - 17) Natural/Ayurvedic/Herbal Formulations
  - 18) Hygiene Products
  - 19) Herbal Cosmetics,
  - 20) Body Lotions, Body Creams
  - 21) Beauty Care products
  - 22) Aloe Vera-based products
  - 23) A very wide range of OTC products
  - 24) Generics

Note : Current prices are mentioned according to raw-materials price, if prices of raw-materials will be increase or decrease, prices will be effect due to raw-materials prices in future.

**If you lost this book...means lost 1 Lakhs of Rupees....**



## Message

( For Distributors / Stockists / Retailers )



Dear Friends,

*It* gives me immense pleasure to congratulate you all for providing your whole heart co-operation to us.

**Taj Pharmaceuticals Ltd., is a public limited company and its growth depends upon mutual collaboration and co-ordination of ourselves.**

Today our company is in the front rank of India's science-based industries with wide ranging capabilities in the complex field of drug manufacture and technology. Our company has a highly organized management, which aims to serve the consumer round the globe.

Our company is well known in the world, in terms of technology, quality and range of medicines manufactured, from simple headache pills to sophisticated antibiotics and complex compounds, almost every type of medicine is now made indigenously in our various manufacturing units approved by regulatory authorities in USA, WHO and per the norms of scheduled 'M' government of India.

You all play a key role in promoting and sustaining development in the vital field of Pharmaceuticals Industry, which has a highest growth rate in our country at the rate of 14 percent per year. It is one of the largest and most advanced among the developing countries.

**Taj Pharmaceuticals Ltd., is technologically strong and totally self-reliant, and our company has low costs of production, low R&D costs, innovative scientific manpower, strength of national laboratories and an increasing balance of trade.**

So, we are intending to maintain our profitability as low as possible, and we have created our product range with utmost care for the reach of common people and their healthcare

Therefore our company will need higher support, skilled and competence personnel and committed outlook from all our distributors/stockists and retailers to fulfill our vision.

I would also like to notify you all that our country is committed to a free market economy and globalization and above all, **we can target more than 70 million middle class consumers which are continuously growing day by day.**

Therefore you must have all felt that you people have a very bright chance to associate with us in the means of distributors/stockists/suppliers/retailers for the all round growth of yourselves as well as the economy of India.

Our company has introduced consumer friendly schemes and we need your support and suggestions in this regard to facilitate our products to common people with more ease and you all play a vital in this regard.

**We have also introduce a surveillance personnel in our company those who are traveling various districts and states of India for the Marketing survey and moreover they are visiting retails corner and stockists and if you have ever retailed any medicine of Taj Pharmaceuticals from company's Product Index and bills are lying with you along with product index then you have a strong chance to win gift worth Rs. 1 lacs on the spot, so we attentive, as you may be the next in the stopover list of our surveillance personnel.**

Therefore we recommend you to keep our Product Index with utmost care.

At last but not the least is that "The Indian pharmaceutical industry is a success story providing employment for millions and ensuring that essential drugs at affordable prices are available to the vast population of this sub-continent."

Thanking You,

For Taj Pharmaceuticals Ltd.,

(Dr. R.K. Singh)

C.M.D

# PRODUCT INDEX

## ALLOPATHIC PRODUCTS

Abcavir	1
Activital-Z	1
Altrol	1
Alfuzin	1
Alzocum	1
Asthom	1
Asthom Forte	1
Adevera	1
Benacof	2
Benazole	2
Blood Donor	2
Bonycal	2
Bonycal Syrup	2
Brain Toner Syrup	2
Brain Toner Tab.	2
Cetrilin	2
Cetrilin-A	2
Calcium Ostrong	3
Cardill	3
Cepokem	3
Ceptrox	3
Clithrocin	3
Cocorex	3
Deprexx	3
Dezrol Ia	4
Diaros	4
Diaros - M	4
Dopin	4
Diabanerve	4
Ditanex	4
Dectrovir	4
Dectrovir-N	5
Dr. Dentist-F	5
Dr. Dentist	5
Dizicum Syrup	5
Dizicum Tabs.	5
Deep Relief	5
Elevenseas	5
Erythrozin	5
Famexavir	6
Femikit	6
Floxin-OZ	6
Floxin Syrup	6
Fantizole	6
Fruitomin Syrup	6
Femidin	6
Frusem	6
Gatimin-OZ	6
Gatimin	7
Gynameno-Plus	7
Gynasafe	7
Gynapill	7
Gynanol	7
Hito - EN Syrup	7
Ibulin	7
Indivir-400	7
IsoteneX	7
Isotromin	7
Lamovir-S	8
Lobivir	8
Lefunodin	8
Levitra	8
Life BC-Vita	8
Lincozin	8
Lipirol	8
Lipirol-AM	8
Mexoquine	9
Metherlin Tab.	9
Mycmun	9
Mifebort	9
Misobort	9
Norvate	9
Namosid	9
Namosid-T	9
Namosid-Cold	10
Namosid-D	10
Namosid+Plus	10
Neurovital Forte	10
Neogra	10
Nerovir	10
Nicotoxin	10
Ocip	10
Osto-Jointer	11
Ostopan	11
Pain Relief	11
Prilosid	11

Prilosid - DM	11
Pronol	11
Paracin Syrup	11
Paracin Tabs.	11
Pyroxi-Kid	12
Relax-D	12
Rupamex	12
Saizen - EN	12
Shape	12
Serafen-P	12
Setro - 4 / 8 mg	12
Safety Sex	12
Sperm Donor	12
Silprex - 5/10 mg	13
Suhagan-50mg	13
Tiagra- 20mg	13
Trip-Mini	13
Trip	13
Trip-max	13
Tuberbutol	13
Tifolic	13
TP-Rox A	13
Tefaaquine	14
Tocoder	14
Troxim-O Syrup	14
Troxim-DT	14
TP-Mox-LB	14
Triamune	14
Thyronim	14
Ulteria	14
Zentic-400	14
Zevadex	15
Zedvin-C	15
Zedvin-T	15
Zithromin Syrup	15
Zithromin Tabs.	15

## INJECTIONS

Alphen	15
Artemotial	15
Benotol	18
Bactram	18
Cepokem	18
Cefozone	18
Clamoxin	18
Cleodin	18
Duralin	18
Deca Duralin	18
Defloxine	18
Emetron	19
Enbrol	19
Gentabet	19
Licozin 1ml	19
Licozin 30ml	19
Methyamin	19
Metherlin	19
Meroken	19
Neurovital Forte	19
Paracin	20
Panadol	20
Protozole	20
Rexipro	20
Setraxone	20
Teracort-1ml	20
Teracort-5ml	20
Tranexa	20
Ulteria	20
Zentrom	20
Zevadex-B Complex	21

## HERBAL PRODUCTS

Anomin Powder	21
Anomin Capsule	21
Anomin Syrup	21
Anti Arthritis	21
Bludcor Powder	21
Bludcor Capsule	21
Bludcor Syrup	22
Breastonic	22
Chyawanprash Special	22
Gastrone	22
Hari Tulsi Kadha	22
Hepatis Powder	22
Hepatis Capsules	22
Hepatis Syrup	23
Hajma-G	23
Honisip	23
Jondiso Powder	23

Jondiso Capsules	23
Jondiso Syrup	23
Joint Pain Killer	23
Kali Tulsi Kadha	23
Lukomin Syrup	24
Livovon Powder	24
Livovon Capsules	24
Livovon Syrup	24
Lifecare Isabgol	24
Lifecare Strong	24
Lifecare Skin Toner	24
Oxyflax	25
Pudina Pachak	25
Pudina Pachak-Liquid	25
Pudina Pachak-Acidog	25
Renolin Powder	25
Renolin Capsules	25
Renolin Syrup	25
Speed Energy	25
Speed Energy Gold	25
Stomoco Care	26
Stone Mine Capsules	26
Taj Hair Care	26
Taj Hair Conditioner	26
Taj Glucose-D	26
Taj Glucose-C	26
Taj Honey	26
Taj Shaktiman	26
Thyrin Powder	27
Thyrin Capsules	27
Thyrin Syrup	27
Vaidics Cough Goli	27

## O.T.C. PRODUCTS

Borozen Plus	27
Chyanwanprash (Sugar Free)	27
Deep Relief	27
Dr.Dentist mouth Wash	27
Iomax	27
Krank Cream	27
Lifecare dry Fruit Powder	27
Lifecare Shakha Pushi Syrup	27
Look's Body Lotion	28
Look's Fairness Cream	28
Look's Scrub	28
Look's Massager	28
Look's Hair Formula Pack	28
Look's Shaving Cream	28
Look's After Shaving Cream	28
Look's Hair Dye	28
Look's Hair Dye (Natural Black)	28
Look's Mehandi	28
Look's Turmeric Cream	28
Look's Hair Conditioner Shampoo	28
Look's Bleach	28
Lady Look's	29
Look's Hair Oil	29
Look's all Purpose Cream	29
Look's Face Pack	29
Look's Shampoo	29
Look's Honey for face	29
Look's Awala Shikakai Shampoo	29
Look's Anti Dandruff Oil	29
Look's Triphala Powder	29
Look's Powder (Mint)	29
Look's Hair Tonic	29
Look's Awala Oil	29
Look's Hair Dye (Brown colour)	29
Look's Mud Pack	30
Look Mud Pack with Neem	30
Look's Mud Pack with Herbal	30
Look's Mud Pack with Orange	30
Look's Skin Oil	30
Nozol Mint	30
Nozol Icy Cool	30
Taj Diaba Sweetex	30
Taj Lipguard	30
Taj Herbal Tea	30
Taj Itchuk Guard	30
Taj Mugal-E-Ajam Sharbat	31
Trishul Balm	31
Taj Lal Tel	31
Vatslya Gripe Water	31
Vaidic Balm	31

## NUTRACEUTICALS PRODUCT

Saizen Baby Milk Powder	31
DairyMan (Milk Item)	31
Lactovite	31

Tablets of Vitamin B Complex with B12

# Neurovital Forte



Vitamin B12 deficiency (B12def) leads to Neurological manifestations and affects all age groups



• Product • Compositions • Indications • Dosage • Contents

## ALLOPATHIC PRODUCTS

### ABCAVIR

Each tablet contains :

Abacavir Sulphate ..... 300 mg

Colour : Approved colour used

**Indications :** Abcavir is used in combination with other medications to treat human immunodeficiency virus (HIV) infection in patients with or without acquired immunodeficiency syndrome (AIDS). Abcavir is in a class of antiviral medications called nucleoside reverse transcriptase inhibitors (NRTIs). It works by slowing the spread of HIV infection in the body. Abcavir is not a cure and may not decrease the number of HIV-related illnesses. Abcavir does not prevent the spread of HIV to other people.

**Dosage :** Abcavir comes as a tablet and a solution (liquid) to take by mouth. It is usually taken twice a day with or without food. To help you remember to take abcavir, take it around the same time every day. Follow the directions on your prescription label carefully, and ask your doctor or pharmacist to explain any part you do not understand. Take abcavir exactly as directed. Do not take more or less of it or take it more often than prescribed by your doctor. Continue to take abcavir even if you feel well. Do not stop taking abcavir without consulting your doctor.

**Presentations :** **US \$**  
30 tablets 28.17 \$

### ACTIVITAL-Z

Each 2gm Contains:

Dextrose.....17.5mg  
Sucrose.....14mg  
Zinc Sulphate.....32.5mg  
Vitamin C.....50mg  
Vitamin B1 .....2.5mg  
Vitamin B12.....2.5mg  
DL-methionine.....50mg

Colour : Approved colour used

**Indications :** Activital is a comprehensive daily food supplement that has a balanced combination of vitamins, minerals and ginseng.

**Dosage :** Activital can be taken after the meals any time during the day but preferably should be taken after breakfast. In case you find it difficult to swallow the capsule with a liquid, you may cut it open, press the contents in a spoon and mix a little jam or honey before taking it. Activital can be taken by both male and females over 12 years of age. Activital is suitable for diabetics as it does not contain sugar.

**Presentations :** **US \$**  
50 gm 0.24 \$  
100 gm 0.43 \$  
250 gm 1.00 \$

### ALTROL

Each film-coated tablet contains:

Anastrozole ..... 1 mg

Colour : Approved colour used

**Indication:** Anastrozole can also be prescribed as adjuvant therapy (treatment that improves the action of another medication) in women with early breast cancer, however, it is not currently PBS subsidised for primary prevention of breast cancer, used to treat some types of breast cancer that depend on estrogen to grow and anastrozole can stop tumor growth by blocking estrogen production.

**Dosage:** As per the Physician's advice.

**Presentations :** **US \$**  
10 tabs. 47.30 \$

### ALFUZIN

Each tablet contains :

Alfuzosin.....10 mg

Colour : Approved colour used

**Indications:** Alfuzosin is used to treat symptoms of benign prostatic hyperplasia (BPH, enlarged prostate) such as frequent, urgent need to urinate during the day and at night, weak urine stream, and difficulty urinating. Alfuzosin is in a class of medications called alpha-1 blockers. It works by relaxing the muscles in the prostate and bladder neck to allow urine to flow more easily.

**Dosage :** As per the physician's advice.

**Presentations :** **US \$**  
10 tablets 1.17 \$

### ALZOCUM

Each tablet contains:

Alprazolam I.P.....0.25mg  
Excipients .....q.s.

Colour : Approved colour used

**Indications :** Alzocum is a potent and time tested beta blocker Controls B.P. Effectively.

**Dosage :** The initial dose is 25 mg daily either alone or added to diuretic therapy. If an optimal response is not achieved, the dosage should be increased to 50 mg daily. Increasing the dosage beyond 50 mg a day is unlikely to produce any further benefit.

**Presentations :** **US \$**  
10 tablets 0.29 \$

### ASTHOM

Each tablet contains :

Salbutamol Sulphate.....2 mg  
Theophylline .....100 mg

Colour : Approved colour used

**Indications :** Asthom are particularly indicated for patients who experience side effects with maximal therapeutic dosages of either theophylline or salbutamol alone and patients with severe asthma.

**Dosage :** As per the physician's advice

**Presentations :** **US \$**  
10 tablets 0.28 \$

### ASTHOM FORTE

Each tablet contains:

Salbutamol Sulphate.....4 mg  
Theophylline .....200 mg

Colour : Approved colour used

**Indications :** Asthom Forte are particularly indicated for patients who experience side effects with maximal therapeutic doses of either theophylline or salbutamol alone and patients with severe asthma.

**Dosage :** As per the physician's advice

**Presentations :** **US \$**  
10 tablets 0.19 \$

### ADEVERA

Each uncoated tablet contains:

Adefovir Dipivoxil.....10 mg

Colour : Approved colour used

**Indications :** Adevera® (adefovir dipivoxil) is a prescription medicine used to treat chronic infection with H - B virus (HBV)

in adults. Adevera does not cure chronic Hepatitis B, and it does not reduce the risk of spreading Hepatitis B to others. An antiviral medicine, Adevera helps stop H - B virus (HBV) from multiplying by blocking HBV DNA polymerase, an enzyme that is necessary for the replication of the



**Benacof™**  
COUGH FORMULA



**बेनाकाँफ**

**Reduces coughing**  
**Relieves sneezing, runny nose**  
**Soothes sore throat**

● Product ● Compositions ● Indications ● Dosage ● Contents

virus in the body.

**Dosage :** Adevera® (adefovir dipivoxil) is provided as a 10 mg tablet that you take once a day by with plain water Adevera can be taken with & without food. If you have or develop kidney problems, your doctor may tell you to take the pill on a different schedule.

<b>Presentations :</b>	<b>US \$</b>
30 tablets	12.50 \$
PVC Bottle with carton	

**BENACOF (Syrup)**

**Each 5 ml. (Teaspoonful) contains:**

Diphenhydramine Hydrochloride IP.....	14.08 mg
Ammonium Chloride IP .....	0.138 g
Sodium Citrate IP .....	57.03 mg
Menthol IP .....	1.14 mg
Ethanol (95 percent) IP .....	0.2625 ml
Ethanol Content 5%.....	v/v

**Colours:** Camoisine; Sunset Yellow FCF, Eythrosine, Caramel IP.

**Indications :** Anaphylaxis, allergic reactions, dystonic reactions due to phenothiazines.

**Dosage :** Not to be used for children under 2 years of age without medical advice.

*Children :* 2-5 Years - ½ teaspoon (2.5ml) 6-12 Years- 1 teaspoonful (5ml) Over 12 Years & adults - 2 teaspoonful (10ml) Dosage to be taken every 4 hours. Not to exceed 12 teaspoonful in 24 hours. Consult physician if coughing persists for more than 4 to 5 days.

<b>Presentations :</b>	<b>US \$</b>
100 ml ( Syrup)	1.23 \$

**BLOOD-DONAR**

**(Soft Gel) each soft-gel capsule contains:**

Carbonyl Iron .....	92mg
Vitamin B12 .....	15mg
Folic Acid .....	1mg
Zinc Sulphate Monohydrate.....	61.8mg

**Colour :** Approved colour used

**Indications :** Fight anemia effectively with Blood Donor

**Dosage :** As per the physician's advice

<b>Presentations :</b>	<b>US \$</b>
10 Soft Gel Capsules	1.15 \$

**BONYCAL**

**Each film-coated tablet contains:**

1.25 g calcium carbonate from an organic source (Oyster Shell) Equivalent to Element Calcium .....	500 mg
Vitamin D3 IP .....	250 IU

**Colour :** Approved colour used

**Indications:** Bonycal is a calcium supplement, which is widely used during pregnancy & lactation and for management of osteoporosis.

**Dosage:** As directed by the physician

<b>Presentations:</b>	<b>US \$</b>
15 tab 500 mg	0.87 \$
15 tab 250 mg	0.46 \$

**BONYCAL (Syrup)**

**Each 5 ml. contains:**

1.25 g calcium carbonate from an organic source (Oyster Shell) Equivalent to Element Calcium .....	500 mg
Vitamin D3 IP .....	250 IU

**Colour :** Approved colour used

**Indications:** Bonycal is a calcium supplement, which is widely used

during pregnancy & lactation and for management of osteoporosis.

**Dosage:** As directed by the physician

<b>Presentations:</b>	<b>US \$</b>
100 ml.	0.87 \$

**BRAIN TONER (Syrup)**

**Each 5ml contains:**

Shankpushpi Ext (Convolvulus pluricularis).....	40 mg
Shankpushpi (Convolvulus pluricularis).....	60 mg
Jatamansi (Nardostachys jatamansi).....	10 mg
Kushtha (Saussurea lappa.....)	10 mg
Vrisha (Phyllanthus emblica).....	60 mg
Ashwagandha.....	50 mg
Brahmi.....	100 mg
Vacha.....	20 mg
Jyotishmati.....	60 mg
Ustukhudus.....	20 mg
Mukta Shukti.....	50 mg

**Colour :** Approved colour used

**Indications :** Brain Toner is an herbal formulation of several medicinal plants which have been categorized in traditional Indian medicine as Medhyarasayanas and used to regulate behavior, improve memory and minimize normal cognitive deficits associated with old age & children.

**Dosage :** 2 to 3 Teaspoon full thrice daily for children above 2 years upto adults or as directed by the physician.

<b>Presentations :</b>	<b>US \$</b>
100 ml	1.08 \$
200 ml	1.41 \$

**BRAIN TONER**

**Each tablet contains:**

Mecobalamin .....	500 mcg
-------------------	---------

**Colour :** Approved colour used

**Indications :** The mentally fatigued and elderly can reduce frustrating bouts of forgetfulness. Brain Toner has been found very effective in helping children maintain appropriate class conduct.

**Dosage :** As per the physician's advice.

<b>Presentations :</b>	<b>US \$</b>
10 tablets	0.83 \$

**CETRILIN**

**Each film coated tablet contains:**

Cetirizine Dihydrochloride .....	10 mg
Excipients.....	q.s.

**Colour:** Titanium Dioxide I.P.

**Indications :** Cetrilin is indicated in the treatment of perennial and seasonal allergic rhinitis pruritus, allergic asthma, allergic conjunctivitis and urticaria.

**Dosage :** As per the physician's advice

<b>Presentations :</b>	<b>US \$</b>
10 tablets	0.65 \$

**CETRILIN-A**

**Each film coated tablet contains:**

Cetirizine Dihydrochloride .....	5 mg
Pseudoephedrine .....	30 mg
Ambroxol.....	60 mg

**Colour:** Approved colour used

**Indications :** Cetrilin-A is indicated in the treatment of perennial and seasonal allergic rhinitis pruritus, allergic asthma, allergic conjunctivitis and urticaria.

**Dosage :** As per the physician's advice

# LIPIROL

Atorvastatin Calcium - 10mg/ 20 mg tablets

- ✓ Reduces total cholesterol by 29% to 45%
- ✓ Reduces LDL cholesterol by 39% to 60%
- ✓ Reduces oxidation of lipids
- ✓ Prevents atherosclerosis

- Dyslipidemia
- Diabetes hypertension & IHD
- Stroke
- Associated renal & retinal problems

• Product • Compositions • Indications • Dosage • Contents

**Presentations :** US \$  
10 tablets 0.80 \$

**CALCIUM OSTRONG**

**Each tablet contains:**  
Elemental Calcium .....250 mg  
Vitamin D3 .....25 I.U.

**Colour:** Approved colour used

**Indications :**

1. Calcium Strong tablets are indicated as a basic dietary supplement.
2. As a prophylactic treatment of the relevant vitamin and mineral deficiency states during pregnancy and/or lactation. Calcium with Magnesium is necessary for the development of strong bones and teeth, also prevents muscle cramping, risk of colon cancer, maintain regular heart beat, protect against osteoporosis and helps relax the central nervous system with added zinc.

**Dosage :** As per the physician's advice

**Presentations :** US \$  
10 tablets 0.75 \$

**CARDILL - 75 mg/150 mg**

**Each tablet contains: (75 mg)**  
Aspirin .....75mg  
Glycine .....37.5 mg

**Each tablet contains: (150 mg)**  
Aspirin .....150mg  
Glycine .....75mg

**Indication:** CARDILL® is a low dose aspirin that helps prevent blood clotting and reduces the risk of heart attack and stroke in patients with blood vessel disorders. Low dose aspirin helps reduce blood stickiness, the tendency of blood to clot. CARDILL is used to help protect against some of the problems which can be caused by clotting in the blood stream. CARDILL may be useful if you are at risk of coronary artery disease, angina, transient ischaemic attacks (TIAs or mini strokes), stroke (due to a blood clot) or heart attack.

**Colour:** Approved colour used

**Dosages:** As directed by the physician.

**Presentations :** US \$  
10 tab. 75 mg 0.15 \$  
10 tab. 150 mg 0.23 \$

**CEPOKEM**

**Each film-coated tablet contains:**  
Cefpodoxime Proxetil USP  
equivalent to Cefpodoxime.....100 mg

**Colour:** Approved colour used

**Indications :** Cepokem (Cefpodoxime proxetil) is indicated for the treatment of patients with mild to moderate infections caused by susceptible strains of the designated micro-organisms in the conditions listed below. Recommended dosages, durations of therapy, and applicable patient populations vary among these infections.

**Colours :** Sunset Yellow & Titanium Dioxide.

**Dosage :** As per the physician's advice.

**Presentations :** US \$  
10 tablets 4.45 \$

**PUDINA PACHAK**

jo bhi khaya turant pachaya

Liquid 10 ml (Rs. 11.00)  
30 ml (Rs. 24.10)  
Pearls  
1 strip (Rs. 10.60) per strip

Pudina Pachak gives quick relief from stomachache, gas and indigestion. Its is a trusted fast action remedy for stomach disorders. Pudina Pachak is completely natural and safe.

**CEPTROX**

**Each film-coated tablet contains:**  
Cefpodoxime Proxetil USP equivalent to Cefpodoxime  
Cefpodoxime ..... 200 mg

**Colour :** Approved colour used.

**Indication:**

**Dosage:** As directed by physician.

**Presentations:** US \$  
6 tabs. 2.63 \$

**CLITHROCIN**

**Each film-coated tablet contains :**  
Clarithromycin USP .....250 mg

**Colour:** Approved colour used

**Indications :** Clithrocin is indicated for the treatment of mild to moderate infections due to susceptible organisms. Upper respiratory tract infections Pharyngitis, tonsillitis. Lower respiratory tract infections Acute and chronic bronchitis, pneumonia Uncomplicated skin and skin structure infections like Folliculitis, Cellulitis, Erysipelas.

**Dosage :** *Adults:* Children > 12 years: The usual dose is one tablet (250 mg) twice daily for 7 days, although this may be increased to two tablets (500 mg) twice daily for up to 14 days in severe infections.  
*Children less than 12 years:* 7.5 mg/kg every 12 hours for 10 days.

**Presentations :** US \$  
6 tablets 2.98 \$

**COCOREX (Syrup) - 100 ml. / 50 ml.**

**Each 5 ml (teaspoonful) contains :**  
Chlopheniramine MaleateIP.....4mg  
Codeine Phosphate IP.....10mg

Contains Carmoisine and sunset yellow FCF as colorants.

**Colour:** Approved colour used

**Indications :** Cocorex- cough syrup is indicated for the treatment of dry cough, irritating, disturbing cough in allergic or infective condition of the respiratory passage, e.g., Sinusitis, hay fever, pharyngitis, acute bronchitis, tuberculosis, and tropical eosinophilic.

**Dosage :** *Adults:* 1teaspoonfull four times per day(5ml)  
*Children (Above 6 years) :* ½ teaspoonful (2.5ml)  
*2-6 years:* 1/4 teaspoonful (1.25ml)

**Presentations :** US \$  
100 ml. 1.22 \$  
50 ml. 0.84 \$

**DEPREXX**

**(Suicidality and Antidepressant drugs)**

**Extended-release tablet:**

Bupropion hydrochloride ..... 150 mg

**Colour:** Approved colour used

**Indication:** DEPREXX is prescribed to help relieve major depression. Symptoms include a severely depressed mood (for 2 weeks or more) and loss of interest or pleasure in usual activities accompanied by sleep and appetite disturbances, agitation or lack of energy, feelings of guilt or worthlessness, decreased sex drive, inability to concentrate, and sometimes, suicidal thoughts or behavior. DEPREXX is thought to work by altering levels of the brain chemicals norepinephrine and dopamine.

**Dosage:** As directed by the physician.

**Presentations :** US \$  
10 tabs. 3.09 \$

**DEZROL LA (1mg / 2mg / 4mg)**

**Each tablet contains: (1 mg)**  
Tolterodine trartrate ..... 1 mg

Nimesulide Tablets 100 mg  
**Namosid**<sup>TM</sup>  
 Dissolves Barrier...Resolves Pain



**For the Management of Pain & Inflammation**

Osteoarthritis, Pain of malignancy,  
 post-operative, trauma, sports  
 injuries, ENT, dental & gynecological disorders.

• Product • Compositions • Indications • Dosage • Contents

Excipient ..... q.s.

**Each tablet contains: (2 mg)**

Tolterodine tritarate ..... 2 mg

Excipient ..... q.s.

**Each tablet contains: (4 mg)**

Tolterodine tritarate ..... 4 mg

Excipient ..... q.s.

**Colour:** Approved colour used

**Indication:** Always stopping for a bathroom visit? Frequent, strong, sudden urges to go are symptoms of overactive bladder (OAB). The good news is that OAB is a real medical condition that can be treated. Relief starts with DEZROL LA a medicine that helps calm the bladder muscle that causes those frequent, sudden urges. Just one pill works for 24 hours to relieve symptoms all day and all night. It's the brand doctors prescribe most for OAB.\*

**Dosages & Safety Information:** You should not take DEZROL LA if you have certain types of stomach problems, glaucoma, or if you have trouble passing urine. DEZROL LA is generally well tolerated. The most common side effect is dry mouth. Other side effects may include headache, constipation, and abdominal pain.

<b>Presentations :</b>	<b>US \$</b>
1 mg, 10 tabs.	1.27 \$
2 mg, 10 tabs.	1.98 \$
4 mg, 10 tabs.	3.38 \$

**DIAROS**

**Each film-coated tablet contains:**

Rosiglitazone maleate ..... 2mg

Glimepiride ..... 1mg

**Colour:** Approved colour used

**Indication:** Rosiglitazone, combined with diet, exercise, weight control and cessation of smoking is used for treating type II diabetes. Rosiglitazone may be used alone or in combination with other types of anti-diabetic drugs such as metformin or sulfonylureas as well as insulin. Since it requires naturally-secreted insulin to be effective, rosiglitazone is not recommended for use in type I diabetes where the amount of insulin is very low or absent.

**Dosage:** Rosiglitazone may be taken once or twice daily, with or without meals. Daily doses range from 4 to 8 mg either with or without other antidiabetic medications. Studies do not demonstrate additional effects when more than 8mg per day are taken.

<b>Presentations :</b>	<b>US \$</b>
10 tabs.	1.22 \$

**DIAROS - M**

**Each film-coated tablet contains:**

Rosiglitazone maleate equivalent to

Rosiglitazone ..... 2 mg

Metformin Hydrochloride IP ..... 500 mg

**Colour:** Ferric Oxide red and Titanium Dioxide

**Indication:** Rosiglitazone, combined with diet, exercise, weight control and cessation of smoking is used for treating type II diabetes. Rosiglitazone may be used alone or in combination with other types of anti-diabetic drugs such as metformin or sulfonylureas as well as insulin. Since it requires naturally-secreted insulin to be effective, rosiglitazone is not recommended for use in type I diabetes where the amount of insulin is very low or absent.

**Dosage:** Rosiglitazone may be taken once or twice daily, with or without meals. Daily doses range from 4 to 8 mg either with or without other antidiabetic medications. Studies do not demonstrate additional effects when more than 8mg per day are taken.

<b>Presentations :</b>	<b>US \$</b>
10 tabs.	1.62 \$

**DOPIN**

**Each tablet contains :**

Dothiepin ..... 5 mg

**Colour:** Approved colour used

**Indications :** Depression. Anxiety associated with depression.

**Dosage :** *Adults:* Initially 75mg daily in divided dosage or single dose at night. Increasing to 150 mg with caution & under close supervision.

*Maintenance:* 150 mg as a single dose at night.

*Children:* Not recommended.

<b>Presentations :</b>	<b>US \$</b>
10 tablets	1.73 \$

**DIABANERVE**

**(Soft Gel ) Each soft-gel capsule contains:**

Mecobalamin ..... 50 mcg

Alpha Lipoic Acid ..... 100 mg

Benfo thiamine I.P ..... 1 mg

Pyridoxine Hydrochloric (B6) I.P. .... 1.5mg

Nicotinamide (B3) I.P ..... 50mg

Calcium Pantothenate (B5) I.P. .... 25mg

Folic Acid I.P. .... 0.75mg

Excipients ..... q.s.

**Colour:** Approved colour used

**Indications :** Diabetic Neuropathies, Peripheral Gout, Mood Neuropathies, Hyperhomocyttemia, Megaloblastic anemia, Vit. B12 deficiency Infections, Neurological pain, Sensory disturbances, Rheumatoid Arthritis, Osteoporosis, disorder, Sleep disturbances, Alzheimer's Disease, Multiple sclerosis, Parkinson's disease, Heart rate variability, Fibromyalgia, Bell's palsy, Herpes Zoster , Cancer, HIV & Ageless medicines.

**Dosage :** As per the physician's advice.

<b>Presentations :</b>	<b>US \$</b>
10 capsules	1.65 \$

**DITANEX - 250 mg / 400 mg**

**Each capsule contains : (250 mg)**

Didanosine ..... 250 mg

**Each capsule contains : (400 mg)**

Didanosine ..... 400 mg

**Indications:** Didanosine (di-DAN-oe-seen) (also known as ddl) is used in the treatment of the infection caused by the human immunodeficiency virus (HIV). HIV is the virus responsible for acquired immune deficiency syndrome (AIDS). Didanosine (ddl) will not cure or prevent HIV infection or AIDS; however, it helps keep HIV from reproducing and appears to slow down the destruction of the immune system. This may help delay the development of problems usually related to AIDS or HIV disease. Didanosine will not keep you from spreading HIV to other people. People who receive this medicine may continue to have the problems usually related to AIDS or HIV disease.

**Colour:** Approved colour used

**Dosage:** As per the physician's advice.

<b>Presentations:</b>	<b>US \$</b>
30 caps. 250 mg	18.80 \$
30 caps. 400 mg	30.08 \$

**DECTROVIR**

**Each film-coated tablet contains:**

Lamivudine ..... 150 mg

Zidovudine USP ..... 300 mg

**Colour:** Approved colour used

**Indications :** Dectrovir is indicated for the treatment of HIV infection, as part of combination therapy.

**Dosage :** The recommended oral dose of Dectrovir for adults and

DIGESTIVE ENZYME

**DIZICUM** LIQUID  
Alpha amylase + pepsin

It is used to treat hyper acidity,  
peptic ulcer oesothagitis & heart burn



• Product • Compositions • Indications • Dosage • Contents

adolescents (at least 12 years of age) is one tablet (containing 150 mg of lamivudine and 300 mg of zidovudine) twice daily with or without food or as per the physician's advice.

<b>Presentations:</b>	<b>US \$</b>
10 tablets	4.45 \$
60 tablets (Contained)	24.39 \$

**DECTROVIR - N**

Each film-coated tablet contains:

Lamivudine.....	150 mg
Zidovudine USP.....	300 mg
Nevirapine.....	200 mg

**Colour:** Approved colour used

**Indications:** Dectrovir-N is indicated for the treatment of HIV infection, once patients have been stabilized on the maintenance regimen of nevirapine 200 mg bd, and have demonstrated adequate tolerability to nevirapine.

**Dosage :** Adults ; 1 tablet twice daily or as per the physician's advice.

<b>Presentations:</b>	<b>US \$</b>
30 tablets	14.67 \$

**DR. DENTIST- F (Gel tube)**

Each 5 gm contains:

Triclosan, Silica, Special Flavour.

**Colour:** Approved colour used

**Indications :** Twice Brushing with Dr. Dentist, gently removes tough stain, long lasting mint flavour keeps mouth clean & fresh, no harsh aprasives or bleach.

**Dosage :** As per the physician's advice or Dentist Doctor's advices.

<b>Presentations :</b>	<b>US \$</b>
100 gm	1.25 \$

**DR. DENTIST (Gel tube)**

Each 5 gm contains:

Sorbitol and/or Glycerine, Silica, SLS, PEG, Gum Binder, Food Colour & Flavour.

**Colour:** Approved colour used

**Indications :** Anti cavity Fluoride Formula fights bad breath and acids that causes cavities by strengthening teeth enamel leaving your teeth strong. Its unique menthol mouthwash gives a freshness that you can feel in your nose and throat.

**Dosage :** Brush your teeth at least twice a day. Children under 7 should use a pea size amount and under supervised brushing to minimize swallowing.

<b>Presentations :</b>	<b>US \$</b>
100 gm	1.20 \$

**DIZICUM (Syrup)**

(approx. 2 teaspoonful Each 10ml contains):

a <sup>-</sup> -Amylase (Fungal Diastase 1:800 from Aspergillus oryzae) I.P. ....	62.5mg
Pepsin I.P. ....	20mg
Flavoured syrupy base.....	q.s.

**Indications :** Hyper acidity, peptic ulcer, reflux, oesophagitis, flatulent dyspepsia, hiatus hernia, heart burn.

**Dosage :** 1-2 teaspoonful to be taken after meal thrice in a day.

**Colour:** Caramel I.P.

<b>Presentations :</b>	<b>US \$</b>
200 ml	1.07 \$

**DIZICUM**

Each tablet contains:

Aluminium hydroxide gel dried.....300mg

Magnesium aluminium silicate .....	50mg
Magnesium hydroxide .....	25mg
Methylpolysiloxane.....	10mg

**Indications :** Hyper acidity, peptic ulcer, reflux, oesophagitis, flatulent dyspepsia, hiatus hernia, heart burn.

**Dosage :** 1-2 tabs. daily after meal. or As directed by the physician.

**Colour:** Approved colour used

<b>Presentations :</b>	<b>US \$</b>
10 tabs	0.23 \$

**DEEP RELIEF (Gel tube)**

Each gram. Contain:.

Diclofenac Diethylamine B.P .....	1.16% w/w
(Equivalent to Diclofenac Sodium 1% w/w)	
Methyl Salicylate I.P .....	10% w/w
Menthol I.P .....	5% w/w
Preservative	
Linseed Oil B.P (containing predominantly - Linolenic acid) .....	3% w/w
Benzyl Alcohol I.P .....	1% w/w
Gel base	

**Colour:** Approved colour used.

**Indications :** Deep Relief can be used to relieve pain such as muscular aches and pains, period pains, headache, backache, rheumatic pain, dental pain and neuralgia. It can also reduce feverishness and the symptoms of colds and flu.

**Dosage :** As per the physician's advice.

<b>Presentations :</b>	<b>US \$</b>
30 gm	0.72 \$
With carton	

**ELEVEN SEAS**

Each soft-gelatin capsule contains:

Cod Liver Oil.....300 mg

**Colour:** Approved colour used.

**Indications :** Eleven Seas Cod Liver Oil Capsules - It is a rich natural source of vitamins A and D which help maintain healthy skin, hair, nails, teeth and bones.

**Dosage :** 1 capsule daily or as per the physician's advice.

<b>Presentations:</b>	<b>US \$</b>
100 cap .PVC Bottle	2.28 \$

**ERYTHROZIN - 250 mg / 500 mg**

Each tablet contains : (250 mg)

Erythromycin.....250 mg

Each tablet contains : (500 mg)

Erythromycin.....500 mg

**Indications :** Acute bacterial pharyngitis, tonsillitis, sinusitis, otitis, mastoiditis, epiglottitis, bronchitis, pneumonia, erysipelas, whooping cough, cellulitis, carbuncle, pyoderma, diphtheria, Legionnaire's disease, chancroid, urogenital.

**Colour:** Approved colour used.

**Dosage :** As per the physician's advice.

<b>Presentations :</b>	<b>US \$</b>
250 mg 10 tablets	0.56 \$
500 mg 10 tablets	0.94 \$

**FAMEXAVIR - 250 mg / 500 mg**

Each tablet contains: (250 mg)

Famciclovir .....
 250 mg |

Each tablet contains: (500 mg)

Famciclovir .....
 500 mg |

**Indications:** Herpes Zoster: Famexavir (famciclovir) is indicated for the

Clindamycin & Clotriazole Vaginal Suppositories

**GYNASAFE™**

Fungicidal, Bactericidal, Trichomonacidal

Trichomoniasis, Candida vulvitis, Vaginal mycoses, Vaginal Candidiasis (Moniliasis), Bacterial Vaginitis, Infective leucorrhoea, mixed infections and non-specific vaginitis.

**ONLY FOR VAGINAL INSERTION.  
NOT FOR ORAL USE.**



• Product • Compositions • Indications • Dosage • Contents

treatment of acute herpes zoster (shingles), treatment or suppression of recurrent genital herpes in immunocompetent patients, and treatment of recurrent mucocutaneous herpes simplex infections in HIV-infected patients.

**Colour:** Approved colour used.

**Dosage:** As per the physician's advice.

<b>Presentations:</b>	<b>US \$</b>
250 mg. 10 tablets	7.25 \$
500 mg. 6 tablets	10.07 \$

**FEMIKIT**

**Each Combikit contains:**

- A. One fluconazole tablet 150 mg**  
Each uncoated tablet contains:  
Fluconazole USP ..... 150 mg
- B. One Azithromycin tablet 1 g.**  
Each film-coated tablet contains:  
Azithromycin Dihydrate USP equivalent to  
Azithromycin ..... 1 g
- C. Two Secnidazole tablet 1 gm**  
Each film-coated tablet contains:  
Secnidazole ..... 1 g

**Colour :** Titanium Dioxide.

**Indication:** Hypersensitivity and other Azole antifungals

**Dosage:** As directed by the physician.

<b>Presentations:</b>	<b>US \$</b>
1 kit	2.40 \$

**FLOXIN-OZ**

**Each tablet contains:**

Ofloxacin U.S.P.....	200 mg
Ornidazole .....	500 mg

**Indications :** To treat diarrhea and dysentery of Protozoal, Bacterial & Mixed origin.

**Dosage :** As per the physician's advice.

<b>Presentations:</b>	<b>US \$</b>
10 tablets	1.09 \$

**FLOXIN (Syrup)**

**Each 5 ml. contains:**

Ofloxacin BP.....	100 mg
-------------------	--------

In a flavoured syrupy base

**Colour:** Sunset Yellow FCF.

**Indications :** To treat diarrhea and dysentery of Protozoal, Bacterial & Mixed origin.

**Dosage :** As per the physician's advice.

<b>Presentations:</b>	<b>US \$</b>
5 ml.	1.28 \$

**FANTIZOLE**

**Each uncoated tablet contains :**

Fluconazole I.P.....	150 mg
Excipients .....	q.s.

**Colour:** Approved colour used.

**Indications :** Fantizole is used to treat fungal infections,cluding yeast infections of the vagina, mouth, throat, oesophagus (tube leading from the mouth to the stomach) abdomen (areabtween the chest and waist), lungs, blood, and other organs. Fantizole is also used to treat meningitis (infection of the membranes covering the brain and spine) caused by fungus.

**Dosage :** As per the physician's advice.

<b>Presentations :</b>	<b>US \$</b>
1 tablet	0.72 \$

4 tablets	2.50 \$
-----------	---------

**FRUITOMIN (Multivitamin Syrup)**

**Each 5ml contains:**

Protein hydrolysate 20% .....	0.333 gm
Carbohydrate .....	3.000 gm
Niacinamid IP .....	10.000 mg
Iron choline Citrate USP .....	15.00 gm
Magnesium Chloride IP .....	3.333 mg
Manganese Chloride USP.....	0.033 mg
As trace element Zinc Sulphate IP .....	2.7 mg
equivalent to Elemental Zinc .....	0.600 mg
L-Lysine Mono Hydrochloride USP .....	20.00 mg
Flavoured Syrupy Base .....	q.s.

**Colour :** Caramel

**Indications:** Protein Concentrate with Iron, Vitamins & Minerals

**Dosage :** As per the physician's advice.

<b>Presentations:</b>	<b>US \$</b>
200 ml	1.35 \$

**FEMIDIN - 20 mg / 40 mg**

**Each tablet contains: (20 mg)**

Famotidine.....	20 mg
-----------------	-------

**Each tablet contains: (40 mg)**

Famotidine.....	40 mg
-----------------	-------

**Indications :** Duodenal and benign gastric ulcers: 40 mg once at bedtime or 20 mg twice daily, 4-8 weeks.

**Colour:** Approved colour used.

**Dosage :** As per physician's advice.

<b>Presentations:</b>	<b>US \$</b>
20mg 10' Pack	0.09 \$
40mg 10' Pack	0.12 \$

**FRUSEM**

**Each tablet contains:**

Fruzemide .....	40 mg
-----------------	-------

**Colour:** Approved colour used.

**Indications :** Mild to moderate Hypertension

**Dosage :** 40-80 mg once or twice daily. Cardiac, pulmonary, renal, hepatic and cerebral oedema: 20-80 mg as a single dose daily or on alternate days. Children: 1-2 mg/kg/day as single dose.

<b>Presentations:</b>	<b>US \$</b>
10 tablets	0.11 \$

**GATIMIN-OZ**

**Each tablet contains:**

Gatifloxacin .....	200 mg
Ornidazole.....	500 mg

**Colour:** Approved colour used.

**Indications :** Gatimin-OZ is a synthetic broad spectrum 8-methoxyfluoroquinolone antibacterial agent. Gatimin-OZ has in vitro activity against a wide range of gram negative and gram positive organisms.

**Dosage :** The recommended dosage for Gatimin-OZ tablets is described below. Doses of Gatimin-OZ are administered once every 24 hours.

<b>Presentations :</b>	<b>US \$</b>
10 tablets	1.08 \$

**GATIMIN**

**Each tablet contains:**

Gatifloxacin .....	400 mg
--------------------	--------

**Colour:** Approved colour used.

**Indications :** Gatifloxacin is indicated for the treatment of infections due

# GYNAPILL™

Levonorgestrel 0.750 mg Tablets

## Emergency Contraceptive Pills

Emergency Contraception consists of the administration of a hormonal product within 72 hours after a unprotected sexual intercourse to prevent pregnancy

• Product • Compositions • Indications • Dosage • Contents

to susceptible strains of the designated micro-organisms in the conditions listed below: Acute bacterial exacerbation of chronic bronchitis

**Dosage :** The recommended dosage for gatifloxacin tablets is described below. Dosages of Gatimin are administered once every 24 hours.

**Presentations :** **US \$**  
10 tablets 0.96 \$

### GYNAMENO-PLUS

**Each tablet contains :**

Tranexamine Acid .....500 mg  
Mefenamic Acid.....250 mg

**Colour:** Approved colour used.

**Indications :** For powerful control of painful bleeding.

**Dosage :** As per the physician's advice.

**Presentations:** **US \$**  
10 tablets 1.70 \$

### GYNASAFE

**Each soft-gel capsule contains:**

Clindamycin Phosphate B.P.  
Equivalent to Clindamycin.....100mg  
Clotrimazole I.P.....200mg  
Excipients.....q.s.

**Colour:** Approved colour used.

**Indications :** Infective leucorrhoea, mixed infections and non-specific vaginitis, Vaginal Candidiasis bacterial vaginosis & Trichomonas.

**Dosage & Administration:** 1 suppositories should be inserted into the vagina for 3 consecutive nights. Preferably before retiring to bed. Treatment should be timed so as to avoid the menstrual period..

**Presentations :** **US \$**  
1 Kit 1.56 \$

### GYNAPILL

**Each film-coated tablet contains:**

Levonorgestrel I.P.....0.75 mg

**Colour:** Titanium Dioxide

**Indications :** Emergency Contraception consists of the administration of a hormonal product within 72 hours after a unprotected sexual intercourse to prevent pregnancy.

**Dosage :** The first tablet must be taken as soon as possible after unprotected intercourse, and within 72 hours (3 days) at the latest after intercourse. The second tablet must be taken 12 hours at the earliest and 24 hours at the latest after the first one.

**Presentations :** **US \$**  
2 tablets 0.84 \$

### GYNANOL (Gel tube)

**Each 1gm contains**

vaginal cream, 2% contains butoconazole nitrate 2%.

**Colour:** Approved colour used.

**Dosage :** As per the Physician's advice

**Indication:** Gynazole (butoconazole nitrate) vaginal cream, 2% is indicated for the local treatment of vulvovaginal candidiasis (infections caused by Candida).

**Presentations :** **US \$**  
30gm 1.65 \$

### HITO - EN (Growth Syrup)

**Each 5ml contains:**

Cyproheptadine Hydrochloride IP (anhydrous).....2mg.  
Tricholine Citrate ..... 275 mg.  
Sorbitol Solution (70%) I.P. .... 3.575 gm.

Flavoured Syrup base.....q.s.

**Colours:** Caramel I.P.

**Dosage:** As directed by the physician.

**Indication:** Symptomatic relief of perennial and seasonal allergic rhinitis, vasomotor rhinitis, allergic conjunctivitis; amelioration of allergic reactions to blood or plasma; management of allergic pruritic symptoms, mild skin manifestations of uncomplicated urticaria and angioedema, and cold urticaria; dermatographism; adjunctive anaphylactic therapy.

**Presentations :** **US \$**  
200ml 4.45 \$

### IBULIN

**Each tablet contains:**

Ibuprofen IP. .... 400 mg

**Colour :** Approved colour used

**Indication:** Ibuprofen works by reducing hormones that cause inflammation and pain in the body. Ibuprofen is used to reduce fever and treat pain or inflammation caused by many conditions such as headache, toothache, back pain, arthritis, menstrual cramps, or minor injury.

**Dosage:** As directed by the physician.

**Presentations:** **US \$**  
30 caps. 15.88 \$

### INDIVIR-400

**Each capsule contains :**

Indinavir Sulphate equivalent to Indinavir.....400 mg

**Colour :** Approved colour used

**Indications:** Treatment of HIV infection in combination with antiretroviral agents.

**Dosage :** Adults: 800mg orally every 8 hours with water 1 hour before or 2 hours after a meal. Patient should drink atleast 1.5 litres of liquids in 24 hours.

**Presentations:** **US \$**  
30 caps. 15.17 \$

### ISOTENEX

**Each tablet contains:**

Isoniazid (INH).....300 mg

**Colour :** Approved colour used

**Indications:** Tuberculosis in children, Prophylaxis in children in contact with open cases.

**Dosage :** Adults: 3-5mg/kg body-wt. upto 300mg daily in a single dose. Children: 10-20mg/kg body-wt. daily in single doses.

**Presentations:** **US \$**  
10 tablets 0.12 \$

### ISOTROMIN

**Each capsule contains:**

Isotretinoin .....20 mg

**Colour :** Approved colour used

**Indications :** Systemic treatment of nodulo-cystic and conglobate acne, severe acne, acne which has not responded to adequate course of systemic antibacterial or acne associated with psychological problems.

**Dosage :** Adults : Initially 500 mcg/kg daily (in 1-2 divided doses) with food, for 4 weeks. If good response, continue for further 8-12 weeks; if



## VATSHALAYA™

### GRIPPE WATER

Vatshalaya Gripe Water, a digestive regulator that keeps the stomach fit keeping the baby healthy & happy.

Contains  
Ajappi - provides microelements,  
digestive soothing agent  
Kohlrabi - provides  
microelements, soothes &  
expels  
Sant - aids digestion  
Ajwain - for better digestion  
Honey - nourishment

Keeps baby healthy by improving  
digestion & curing stomach ailments

# Alprazolam Tablets I.P. 0.25 mg



**Alzocum is indicated in the treatment of hypertension, angina pectoris and post-myocardial infarction.**

**• Product • Compositions • Indications • Dosage • Contents**

little response increase to 1 mg/kg daily 8-12 weeks. If intolerant, reduce dose to 100-200 mcg/kg daily. Usually given for 16 weeks, repeat course is not normally required.

*Children:* Not recommended.

**Presentations:** **US \$**  
 10 caps. 6.26 \$

**LAMOVI-R**

**Each tablet contains :**

Stavudine .....30 mg  
 Lamivudine .....150 mg

**Colour :** Approved colour used

**Indications:** Lamivir-S is indicated for the treatment of HIV infection as part of combination therapy.

**Dosage:** 1 tablet twice daily for patients weighing < 60 kg

**Presentations:** **US \$**  
 10 tablets 2.35 \$  
 60 tablets 14.10 \$

**LOBIVIR**

**Each film-coated tablet contains :**

Lamivudine.....100 mg

**Colour :** Approved colour used

**Indications :** Lobivir HBV is indicated for the treatment of chronic Hepatitis B and evidence of hepatitis B virus (HBV) replication in patients with decompensated liver disease or active inflammation and/or fibrosis.

**Dosage :** The recommended dosage of Lobivir HBV is 100 mg once daily or as per the physician's advice.

**Presentations :** **US \$**  
 10 tablets 17.82 \$

**LEFUNODIN - 10 mg / 20 mg**

**Each tablet contains : (10 mg)**

Leflunomide.....10 mg

**Each tablet contains : (20 mg)**

Leflunomide.....20 mg

**Indications :** Rheumatoid arthritis.

**Colour :** Approved colour used

**Dosage :** As per the physician's advice.

**Presentations :** **US \$**  
 10mg 10 tablets 1.75 \$  
 20mg 10 tablets 3.35 \$

**LEVIGRA**

**Each film-coated tablet contains:**

Vardenafil ..... 20 mg  
 Excipients ..... q.s.

**Colour :** Approved colour used

**Indications :** LAVIGRA is indicated for the treatment of erectile dysfunction in men.

**Dosage :** 20 mg or needed approximately 1 hour before sexual activity. However, LAVIGRA may be taken anywhere from 4 hours to 0.5 hour before sexual activity. Based on effectiveness and toleration, the dose may be increased to a maximum recommended dose of 40 mg or decreased to 10 mg. The maximum dose once per day.

**Presentations :** **US \$**  
 2 tablets 1.65 \$  
 4 tablets 2.87 \$

**LIFE BC-VITA**

**Each capsule contains:**

MixedCarotene.....10.33 mg  
 Bentothiamine..... 1 mg  
 VitaminB6.....1.34 mg  
 VitaminB12.....1 mcg  
 VitaminD3.....200 IU  
 Nicotinamide.....15 mg  
 Calcium Pantothenate.....1 mg  
 Calcium (as Anhydrous Calcium Hydrogen Phosphate).....50 mg  
 Phosphorus.....38.75 mg  
 Potassium.....1 mg  
 Copper.....0.01 mg  
 Magnesium.....0.5 mg  
 Zinc.....0.15 mg

**Indications :** B. Complex factors

**Colour :** Approved colour used

**Dosage :** As per the physician's advice.

**Presentations :** **US \$**  
 10 caps. 0.86 \$

**LINCOZIN - 250 mg / 500 mg**

**Each capsule contains: (250 mg)**

Lincomycine Hydrochloride I.P  
 equivalent to Lincomycin base.....250 mg

**Each capsule contains: (500 mg)**

Lincomycine Hydrochloride I.P  
 equivalent to Lincomycin base.....500 mg

**Indications :** Lincomycin has been used in the treatment of serious skin infections caused by susceptible strains of streptococci, pneumococci, and staphylococci.

**Indications :** B. Complex factors

**Dosage :** As per physician's advice.

**Presentations :** **US \$**  
 250 mg. 10 caps. 1.38 \$  
 500 mg. 10 caps. 2.15 \$

**LIPIROL 10 mg / 20 mg**

**Each tablet contains : (10 mg)**

Atorvastatin..... 10 mg

**Each tablet contains : (20 mg)**

Atorvastatin..... 20 mg

**Indications :** Lipirol is a prescription drug. It is used in patients with multiple risk factors for heart disease such as family history, high blood pressure, age, low HDL or smoking to reduce the risk of heart attack and stroke. Lipirol is also used in patients with type 2 diabetes and at least one other risk factor for heart disease such as high blood pressure, smoking or complications of diabetes, including eye disease and protein in urine, to reduce the risk of heart attack and stroke.

**Colour:** Approved colour used.

**Dosage :** As per the physician's advice.

**Presentations:** **US \$**  
 10mg 10 tablets 1.49 \$  
 20mg 10 tablets 2.04 \$

**LIPIROL-AM**

**Each tablet contains :**

Atorvastatin.....10 mg  
 Amlodipine..... 5 mg

**Colour:** Approved colour used.

**Indications:** Lipirol-Am is a prescription drug. It is used in patients with multiple risk factors for heart disease such as family history, high blood pressure, age, low HDL or smoking to reduce the risk of heart attack and stroke.



**An antiviral medicine, Adevera helps stop hepatitis B virus (HBV) from multiplying by blocking HBV DNA polymerase, an enzyme that is necessary for the replication of the virus in the body.**

• Product • Compositions • Indications • Dosage • Contents

**Dosage :** As per the physician's advice.

**Presentations:** **US \$**  
15 tablets 2.28 \$

**MEXOQUINE**

**Each uncoated tablet contains :**

Mefloquine Hydrochloride equivalent to  
Mefloquine.....250 mg

**Colour:** Approved colour used.

**Indications :** Moxoquine is for use as a second line treatment in chloroquine resistant malaria, severe malaria due to *P. falciparum* and *P. vivax* including cerebral malaria. Not to be used as a first line treatment for malaria.

**Dosage :** Moxoquine should be taken with plenty of water and preferably with food. The dosage depends on the immune status and body weight of the patient.

*Adults :* 15-25 mg per kg body weight or as per the physician's advice.

**Presentations :** **US \$**  
6 tablets 5.21 \$

**METHERLIN**

**Each sugar coated tablet contains:**

Methylergometrine Maleate IP..... 0.125 mg

**Colour:** Titanium dioxide IP

**Indications :** Nausea and vomiting associated with migraine, Labyrinthine disorders and radiation therapy:

**Dosage :** 25 mg b.i.d. on day 1 and 25 mg once at night daily.

**Presentations :** **US \$**  
10 tablets 1.54 \$

**MYCOMUN**

**Each tablet contains :**

Mycophenolate Mofetil .....500 mg

**Colour:** Approved colour used.

**Indications :** Mycophenolate is indicated for the prophylaxis of organ rejection in patients receiving allogeneic renal, cardiac or hepatic transplants. Mycophenolate should be used concomitantly with cyclosporine and corticosteroids.

**Dosage :** A dose of 1g administered orally twice a day (daily dose of 2g) is recommended for use in renal transplant patients or as per the physician's advice.

**Presentations:** **US \$**  
10 tablets 19.12 \$

**MIFEBORT**

**Each film coated tablet contains:**

Mifepristone.....200 mg  
Excipients.....q.s.

**Colour:** Approved colour used.

**Indications :** Mifebort is indicated for the medical termination of intrauterine pregnancy through 49 days pregnancy. For purposes of this treatment, pregnancy is dated from the first day of the last menstrual period in a presumed 28 day cycle with ovulation occurring at mid-cycle. Any intrauterine device [IUD] should be removed before treatment with Mifebort begins. Patients taking Mifebort must take 400 mg of Misobort two days after taking mifepristone unless a complete abortion has already been confirmed before that time (see Dosage And Administration). Pregnancy termination by surgery is recommended in cases when Mifebort and Misobort fail to cause termination of intrauterine pregnancy.

**Dosage :** Treatment with Mifebort and Misobort for the termination of pregnancy requires three office visits by the patient. Mifebort may be administered only in a clinic, medical office, or hospital, by or under the supervision of a gynecologist, able to assess the gestational age of an

embryo and to diagnose ectopic pregnancies. Gynecologist must also be able to provide surgical intervention in cases of incomplete abortion or severe bleeding, if necessary. Mifebort. Unless abortion has occurred and has been confirmed by clinical examination or ultrasonographic scan, the patient takes two 200 mg tablets (400 mg) of Misobort orally.

**Presentations :** **US \$**  
1 tablet 7.17 \$

**MISOBORT - 100 mg / 200 mg**

**Each uncoated tablet contain: (100 mg)**

Misoprostol.....100 mcg  
Excipients.....q.s.

**Each uncoated tablet contain: (200 mg)**

Misoprostol.....200 mcg  
Excipients.....q.s.

**Colour:** Approved colour used.

**Indications :** Treatment of duodenal, gastric and NSAID induced ulceration. Misobortol should be taken for the duration of NSAID therapy.

**Dosage :** The recommended adult oral dose for the treatment of duodenal, gastric and NSAID induced ulceration is 200 mcg 4 times daily with food and at bedtime for 4-8 weeks. If this dose is not tolerated, a dose of 100 mcg can be used.

**Presentations :** **US \$**  
100 mg, 4 tablets 1.10 \$  
200 mg, 4 tablets 1.35 \$

**NORVATE - 5 mg / 10 mg**

**Each uncoated tablet contains: (5 mg)**

Amlodipine Besilate B.P.....5mg  
(Equivalent to Amlodipine)

**Each uncoated tablet contains: (10 mg)**

Amlodipine Besilate B.P.....10mg  
(Equivalent to Amlodipine)

**Colour:** Approved colour used.

**Indication :** Norvate is indicated for high blood pressure and angina. In clinical trial, the most common side effects for NORVATE versus placebo were edema (8.3% vs 2.4%), headache (7.3%vs 7.8%), fatigue (4.5% vs2.8%), and dizziness (3.2% vs 3.4%).

**Dosage:** As for physician's advice.

**Presentations :** **US \$**  
5 mg, 10 tablets 0.70 \$  
10 mg, 10 tablets 0.85 \$

**NAMOSID**

**Each tablet contains:**

Nimesulide.....100 mg

**Colour:** Approved colour used.

**Indications :** Nimesulide is indicated in the treatment of a variety of painful inflammatory conditions including those associated with osteoarthritis, postoperative trauma, sports injuries, acute musculoskeletal disorders including tendonitis, tenosynovitis, sprains, strains and low back pain, ear, nose and throat disorders, dental surgery, bursitis/tendonitis, thrombophlebitis, pharyngitis and gynaecological disorders.

**Dosage :** Usual oral dose of Nimesulide in adults is 100 mg twice daily.

**Presentations :** **US \$**  
10 tablets 0.50 \$

**NAMOSID-T**

**Each Tablet Contains:**

Nimesulide.....100mg  
Tizanidine.....2mg  
Paracetamol.....325mg

**Colour:** Approved colour used.

# BRAIN TONER™ SYRUP

Promotes Growth & Regenerate Nerve Cells

Help maintain your  
working memory in  
the short term



Ayurvedic Food Supplement

## • Product • Compositions • Indications • Dosage • Contents

**Indications :** Nimesulide is indicated in the treatment of a variety of painful inflammatory conditions including those associated with osteoarthritis, postoperative trauma, sports injuries, acute musculoskeletal disorders including tendonitis, tenosynovitis, sprains, strains and low back pain, ear, nose and throat disorders, dental surgery, bursitis/tendonitis, thrombophlebitis, pharyngitis and gynaecological disorders.

**Dosage :** Usual oral dose of Nimesulide in adults is 100 mg twice daily.

**Presentations :** US \$  
10 tablets 0.67 \$

### NAMOSID - COLD

**Each tablet contains:**

Nimesulide.....100mg  
Caffeine.....25mg  
Chlorphenamine Maleate.....4mg

**Colour:** Approved colour used.

**Indications :** Namosid-cold is indicated in musculoskeletal disorders, dysmenorrhoea, thrombophlebitis, postoperative pain, dental and ENT inflammation.

**Dosage :** Adults: 100 mg twice daily. Children: 5 mg/kg/day in 2-3 divided doses.

**Presentations :** US \$  
10 tablets 0.64 \$

### NAMOSID - D

**Each tablet contains:**

Nimesulide.....100mg  
Diclofenac Sodium.....50mg

**Colour:** Approved colour used.

**Indications :** Namosid -D is indicated in musculoskeletal disorders, dysmenorrhoea, thrombophlebitis, postoperative pain, dental and ENT inflammation.

**Dosage :** Adults: 100 mg twice daily. Children: 5 mg/kg/day in 2-3 divided doses.

**Presentations :** US \$  
10 tablets 0.58 \$

### NAMOSID+Plus

**Each uncoated tablet contains:**

Nimesulide B.P.....100mg  
Paracetamol I.P.....325mg  
Excipients.....q.s.

**Colour:** Approved colour used.

**Indications :** Painful inflammatory conditions namely teoarthritis, rheumatoid arthritis, postoperative pain, dental pain.

**Dosage :** 1 tablet twice daily.

**Presentations :** US \$  
10 tablets 0.62 \$

### NEUROVITAL FORTE

**Each film-coated tablet contains:**

Thiamine Mononitrate I.P.....10mg  
Riboflavine I.P.....10mg  
Pyridoxine Hydrochloride IP.....3mg  
Cyanocobalamin Triturate in Gelatin  
equivalent to Cyanocobalamin I.P.....15 mcg  
Nicotinamide I.P.....45 mg  
Calcium Pantothenate I.P.....50 mg

**Colours:** Ponceau 4R Lake and TitaniumDioxide I.P  
Appropriate overages added.

**Indications :** It may be useful in the nutritional management of patients during prolonged convalescence associated with major surgery. It is also indicated for stress conditions, as an adjunct to antibiotics and

diuretic therapy, pre and post operative cases, liver conditions, gastrointestinal disorders interfering with intake or absorption of water-soluble vitamins, prolonged or wasting diseases, diabetes, burns, fractures, severe infections, and some psychological disorders.

**Dosage :** One tablet daily or as directed by the physician.

**Presentations :** US \$  
10 tablets 0.18 \$

### NEOGRA - 50 mg / 100 mg

**Each film-coated tablet contains: (50 mg)**

Sildenafil Citrate.....50mg

**Each film-coated tablet contains: (100 mg)**

Sildenafil Citrate.....100 mg

**Indications :** NEOGRA is indicated for the treatment of erectile dysfunction in men.

**Dosage :** 50 mg or needed approximately 1 hour before sexual activity. However, NEOGRA may be taken anywhere from 4 hours to 0.5 hour before sexual activity. Based on effectiveness and toleration, the dose may be increased to a maximum recommended dose of 100 mg or decreased to 25 mg. The maximum dose once per day.

**Presentations :** US \$  
50 mg, 4 tablets 1.44 \$  
50 mg, 9 tablets 2.28 \$  
100 mg, 4 tablets 1.86 \$  
100 mg, 9 tablets 3.60 \$

### NERO VIR

**Each uncoated tablet contains:**

Nelfinavir mesylate equivalent to  
Nelfinavir .....250 mg

**Colour:** Approved colour used.

**Indications :** Netrovir in combination with other antiretroviral agents is indicated for the treatment of HIV infection.

**Dosage :** Adults : 1.25g twice daily or 750mg thrice daily. Children: 3-13 yrs. initially 25-30mg/kg thrice daily. Not recommended for children under 3 years of age.

**Presentations:** US \$  
100 tabs. 52.17 \$

### NICOTOXIN

**Each film coated tablet contains :**

Bupropion hydrochloride 150 mg  
(As extended release tablets).....150 mg

**Colour:** Approved colour used.

**Indications:** Nicotoxin is indicated for the treatment of depression. It is also indicated as a smoking cessation treatment.

**Dosage :** Adults: Initially, 150 mg once daily in the morning; titrate after no less than 4 days to 150 mg twice daily if needed. The onset of antidepressant effects takes 1-3 weeks, maximal effect may not be noted for 4 weeks. The lowest dosage that maintains remission is recommended.

**Presentations:** US \$  
10 tablets 0.82 \$

### OCIP

**(Dihydration Powder)**

**Reduced Osmolarity grams/litre.**

Sodium Chloride ..... 2.6 g



Miswak is scientifically formulated, Ayurvedic toothpaste, from pure extract of the Miswak plant, 'Salvadora Persica the famous Toothbrush Tree' used for centuries. The astringent and antibacterial properties of Miswak help reduce tooth decay, tight plaque and prevent gum disease.

50 gm. Rs. 12.00  
100 gm. Rs. 21.70  
200 gm. Rs. 39.80



Paracetamol, Ibuprofen & Caffeine Tablets

# PAIN RELIEF™

Analgesic, Anti-inflammatory, Antipyretic

• Body pain • Headache • Rheumatism  
• Toothache • Fever • Cold

PAIN RELIEF  
PAIN RELIEF

Prompt temporary relief from minor pain due to arthritis, inflammation and stiffness.

**• Product • Compositions • Indications • Dosage • Contents**

Anhydrous Glucose .....	13.5 g
Potassium Chloride .....	1.5 g
Trisodium citrate, Dihydrate .....	2.9 g

**Colour:** Approved colour used.

**Indication:**

**Dosage:** As directed by the physician.

<b>Presentations:</b>	<b>US \$</b>
12.5 gram	0.21 \$

**OSTO-JOINTER**

**Each tablet contains:**

Protein.....	21 g
Carbohydrates.....	65 g
Fat.....	0.6 g
Vitamin A.....	5300 IU
Vitamin B1.....	3.3mg
Vitamin B2.....	4.5 mg
Vitamin C.....	83 mg
Niacin amide.....	51 mg
Vitamin B6.....	1.6 mg
Vitamin K.....	45 mcg
Folic Acid.....	166mcg
Biotin.....	33 mcg
Vitamin B12.....	1.6 mcg
Vitamin D3.....	300 IU
Vitamin E.....	16 IU
Calcium Pantothenate.....	3.3 mg
Calcium Phosphate.....	1500 mg
Zinc Oxide.....	5 mg
Manganese Sulphate.....	2 mg
Magnesium Oxide.....	20 mg
Selenium Dioxide.....	50 mg
Ferric Ammonium Citrate.....	25 mg
Copper Sulphate.....	1mg
Lactobacillus.....	1 x 100
Energy.....	349 Kcal

**Colour:** Approved colour used.

**Indications :** Pain Reliever, also indicated in fever related pains.

**Dosage :** As per the physician's advice.

<b>Presentation :</b>	<b>US \$</b>
10 tablets	0.98 \$

**OSTOPAN**

**Each uncoated tablet contains:**

Diclofenac .....	50 mg
Paracetamol.....	650 mg

**Colour:** Tartrazine Yellow

**Indication :** Pain Reliever, also indicated in fever related pains.

**Dosage :** As per the physician's advice.

<b>Presentations:</b>	<b>US \$</b>
10 tablets	0.27 \$

**PAIN RELIEF**

**Each film-coated tablet contains:**

Paracetamol I.P.....	325 mg
Ibuprofen I.P.....	200 mg
Caffeine I.P.....	40 mg
Excipients.....	q.s.

**Colour:** Approved colour used.

**Indications :** For fast relief from Headache, Toothache, Muscular ache, pain, Cold Symptoms and Feverish conditions.

**Dosage :** 1-2 Tablets 3 to 4 times daily. In accordance with age or as directed by the Physician.

<b>Presentations :</b>	<b>US \$</b>
10 tablets	0.40 \$

**PRILOSID**

**Each Sugar Coated Cap. ( E.C. granules ) contains:**

Omeprazol.....	20 mg
----------------	-------

**Colour:** Titanium Dioxide IP.

**Indications :** Suppresses gastric acid secretion by specific inhibition of the enzyme HK ATPase present on the secretory surface of the gastric parietal cell. This blocks the final and common step in gastric acid secretion. Both basal and stimulated acid secretions are inhibited irrespective of the stimulus. Peptic activity is reduced. It suppresses H. Pylori.

**Dosage :** As per the physician's advice.

<b>Presentations :</b>	<b>US \$</b>
10 caps	0.89 \$

**PRILOSID - DM**

**Each Sugar Coated Cap. ( E.C. granules ) contains:**

Omeprazol.....	20 mg
Domperidone .....	10 mg

**Colour:** Titanium Dioxide IP.

**Indications :** Suppresses gastric acid secretion by specific inhibition of the enzyme HK ATPase present on the secretory surface of the gastric parietal cell. This blocks the final and common step in gastric acid secretion. Both basal and stimulated acid secretions are inhibited irrespective of the stimulus. Peptic activity is reduced. It suppresses H. Pylori.

**Dosage :** As per the physician's advice.

<b>Presentations :</b>	<b>US \$</b>
10 caps	1.29 \$

**PRONOL - 40 mg / 80 mg**

**Each uncoated tablet contains:**

Promethazine.....	40 mg
Promethazine.....	80 mg

**Colour:** Approved colour used.

**Indications:** Anti-Anginal

**Dosage :** 2 tablets daily or as per the physician's advice.

<b>Presentations:</b>	<b>US \$</b>
40mg. 10 tablets	0.45 \$
80mg. 10 tablets	0.75 \$

**PARACIN (SYRUP)**

**Each 5 ml contains:**

Paracetamol IP.....	62.5 mg
Ibuprofen IP.....	100 mg
Flavoured Syrup Base.....	q.s.

**Colour:** Sunset Yellow FCF

**Indications :** Combinations of Ibuprofen & Paracetamol are available as they supplement each other's action. Non-articular rheumatic conditions, rheumatoid or osteoarthritis. Cervical spondylosis, infective inflammation & dental conditions. Pain, fever associated with inflammation.

**Dosage :** As per the physician's advice.

<b>Presentations :</b>	<b>US \$</b>
60 ml.	0.29 \$

**PARACIN**

**Each uncoated tablet contains:**

Paracetamol IP.....	500 mg.
---------------------	---------

**Colour:** Approved colour used.

**Indications :** Combinations of Ibuprofen & Paracetamol are available as they supplement each other's action. Non-articular rheumatic conditions, rheumatoid or osteoarthritis. Cervical spondylosis, infective inflammation

# Cetirilin<sup>®</sup>

Cetirizine Dihydrochloride Tablets

Cetirilin is indicated in the treatment of perennial and seasonal allergic rhinitis pruritus, allergic asthma, allergic conjunctivitis and urticaria.

सेट्रीलिन



## • Product • Compositions • Indications • Dosage • Contents

& dental conditions. Pain, fever associated with inflammation.

**Dosage :** As per the physician's advice.

**Presentations :** US \$  
6 tab. 0.11 \$

### PYROXI-KID

**Each uncoated tablet contains:**

Piroxicam.....20 mg

**Indications:** Anti-reheumetoidal.

**Colour:** Approved colour used.

**Dosage:** 2 tablets daily or as per the physician's advice.

**Presentations :** US \$  
10 tablets 0.71 \$

### RELAX-D

**Each tablet contains:**

Dicyclomine .....20 mg.

Mefenamic acid .....500 mg.

**Colour:** Approved colour used.

**Indication:** Adjunct in gastrointestinal disorders characterised by smooth muscle spasm. As urinary antispasmodic, renal colics, spasmodic dysmenorrhoea.

**Dosage :** As per the physician's advice.

**Presentations :** US \$  
10 tablets 0.46 \$

### RUPAMEX

**Each uncoated tablet contains:**

Rupatadine Fumarate  
equivalent to Rupatadine.....10 mg.

**Colour:** Approved colour used.

**Indications :** Symptomatic treatment of seasonal and perennial allergic rhinitis.

**Dosage :** \*Adults and adolescents (above 12 years) : The recommended dosage is 10 mg (one tablet) once daily, with or without food.

\*Elderly : Rupatadine should be used with caution in elderly. No information is available that indicates the requirement of any dose adjustment in this population.

\*Children: Neither the safety nor the efficacy of Rupatadine has been established in patients less than 12 years of age.

**Presentations :** US \$  
10 tablets 1.10 \$

### SAIZEN -EN

**Each 5ml contains:**

Cyproheptadine Hydrochloride IP (anhydrous).....2mg

Flavoured Syrup base.....q.s.

**Colours:** Ponceau 4R & Carmoisine

**Dosage:** Adults: 2 teaspoonful (10ml) 3 or 4 times a day

Children: 2 to 6 years 1 teaspoonful (5ml), 3 times a day or as directed by the physician

**Indication:** Symptomatic relief of perennial and seasonal allergic rhinitis, vasomotor rhinitis, allergic conjunctivitis; amelioration of allergic reactions to blood or plasma; management of allergic pruritic symptoms, mild skin manifestations of uncomplicated urticaria and angioedema, and cold urticaria; dermatographism; adjunctive anaphylactic therapy.

**Presentations :** US \$  
200ml 1.45 \$

### SHAPE - 5mg. / 10 mg.

**Each capsule contains: (5 mg.)**

Sibutramine.....5mg.

**Each capsule contains: (10 mg.)**

Sibutramine.....10mg.

**Colour:** Approved colour used.

**Dosage :** As per the Physician's advice

**Indication:** Sibutramine is indicated for the treatment in Obesity

**Presentations :** US \$  
5mg 1.75 \$  
10mg 2.35 \$

### SERAFEN-P

**Each tablet contains:**

Serratiopeptidase.....5 mg.

Paracetamol.....500 mg.

Aceclofenac.....100 mg.

**Colour:** Approved colour used.

**Indications :** Rheumatoid arthritis, osteoarthritis, ankylosing spondylitis, cervical spondylitis, intervertebral disc syndrome, sciatica, non-articular rheumatic conditions. Post-operative & traumatic inflammations. Painful inflammatory conditions in gynaecology & dentistry. Acute gout.

**Dosage :** As per the physician's advice.

**Presentations :** US \$  
10 tablets 1.02 \$

### SETRO - 4 mg / 8 mg

**Each tablet contains: (4 mg.)**

Ondansetron.....4 mg.

**Each tablet contains: (8 mg.)**

Ondansetron.....8 mg.

**Colour:** Approved colour used.

**Indications :** Constipation, sensation of warmth, flushing in the epigastrium. Rare allergic reaction such as rash, anaphylaxis, bronchospasm, breathlessness, angioedema, urticaria, headache, transient blurred vision, transient elevations of transaminase levels.

**Dosage :** As per the physician's advice.

**Presentations :** US \$  
6 tablets: 4mg 0.69 \$  
6 tablets: 8mg 1.35 \$

### SAFETY SEX

**Each soft-gel capsule contains :**

Clindamycin Phosphate B.

Equivalent to Clindamycin Clotrimazole I.P .....100 mg

Metronidazole.....100 mg

**Colour:** Approved colour used.

**Indications :** Above 18 year's Female Vaginal use, Fungicidal, Bacterial, Trichomonacidal.

**Dosage :** As per the physician's advice.

**Presentations :** US \$  
3 soft gel capsules 1.30 \$

### SPERM DONOR

**Each tablet contains:**

Vitamin A Acetate.....5000 I.U

Vitamin D3.....400I.U

Vitamin E Acetate.....15 I.U

Vitamin B12.....10 mcg

Folic Acid.....1000 mcg

Vitamin C.....150 mg

Ferrous fumarate.....73 mg

Zinc Sulphate.....84.20 mg

Copper Sulphate.....8.00 mg

Magnese Sulphate.....480mg

Magnesium Sul.....12.32 mg

Potassium Iodide.....590 mcg



**COCOREX\*** **50**  
COUGH SYRUP 50 ML.

- ANTI-ALLERGIC
- ANIT-TUSSIVE
- FOR DRY COUGH

कोकोरेक्स  
सूखा खासी के लिए  
सर्वोत्तम

• Product • Compositions • Indications • Dosage • Contents

Ashwagandha.....50 mg  
Brahmi.....10 mg

**Colour:** Approved colour used.

**Indications :** Maximum Performance Formula for keeps your energized round the clock.

**Dosage :** One tablet every morning

**Presentations :** **US \$**  
30 tablets 3.85 \$

**SILPREX - 5 mg / 10 mg**

**Each uncoated tablet contains: (5 mg.)**

Diazepam I.P.....5 mg

**Each uncoated tablet contains: (10 mg.)**

Diazepam.....I.P.....10 mg

**Colour:** Approved colour used.

**Indications :** Diazepam has the typical activity spectrum of benzodiazepines encompassing anxiolysis, muscular relaxation, sleep modifying and anticonvulsant effects.

**Dosage :** *Adults* : 2.5-10mg 2-4 times daily depending on symptoms and severity. *Children* : upto 3 yrs: 1-6 mg daily in divided doses. 4-14 yrs: 4-12 mg day in divided doses.

**Presentations :** **US \$**  
5mg, 10 tablets 0.24 \$  
10mg, 10 tablets 0.38 \$

**SUHAGAN**

**Each film-coated tablet contains:**

Sildenafil Citrate.....50 mg

**Colour:** Approved colour used.

**Indications :** SUHAGAN is indicated for the treatment of erectile dysfunction in men.

**Dosage :** 50 mg or needed approximately 1 hour before sexual activity. However, SUHAGAN may be taken anywhere from 4 hours to 0.5 hour before sexual activity. Based on effectiveness and toleration, the dose may be increased to a maximum recommended dose of 100 mg or decreased to 25 mg. The maximum dose once per day.

**Presentations :** **US \$**  
4 tablets 1.46 \$  
9 tablets 2.52 \$

**TIAGRA**

**Each tablet contains:**

Tadalafil.....20 mg

**Colour:** Approved colour used.

**Indications :** TIAGRA is indicated for the treatment of erectile dysfunction in men.

**Dosage :** 20 mg or needed approximately 1 hour before sexual activity. However, TIAGRA may be taken anywhere from 4 hours to 0.5 hour before sexual activity. Based on effectiveness and toleration, the dose may be increased to a maximum recommended dose of 40 mg or decreased to 10 mg. The maximum dose once per day.

**Presentations :** **US \$**  
2 x 2 tablets 1.73 \$

**TRIP-MINI**

**Each kit contains:**

1 cap of Rifampicin.....100 mg

1 Tab of Pyrazinamide.....300 mg

1 Tab of INH.....50 mg

**Colour:** Approved colour used.

**Indications :** Rifampicin, Ethambutol, Isoniazid, Pyrazinamide and Streptomycin are used in medication and management of Tuberculosis.

**Dosage :** *Children* : 10-15 mg /kg body wt. daily as single dose.

**Presentations :** **US \$**  
1kit 0.19 \$

**TRIP**

**Each kit contains:**

1 cap of Rifampicin.....450 mg

1 Tab of Ethambutol.....800 mg

1 Tab of INH.....150 mg

**Colour:** Approved colour used.

**Indications :** Rifampicin, Ethambutol, Isoniazid, Pyrazinamide and Streptomycin are used in medication and management of Tuberculosis.

**Dosage :** *Adults* : (below 50 kg) : 450 mg daily as a single dose. More than 50 kg : upto 600 mg daily.

**Presentations :** **US \$**  
1 kit 0.22 \$

**TRIP-MAX**

**Each kit contains:**

1 cap of Rifampicin.....450 mg

1 Tab of Ethambutol.....800 mg

1 Tab of INH.....150 mg

2 Tab of Pyrazinamide.....750 mg

**Colour:** Approved colour used.

**Indications :** Rifampicin, Ethambutol, Isoniazid, Pyrazinamide and Streptomycin are used in medication and management of Tuberculosis.

**Dosage :** *Adults* : (below 50 kg) : 450 mg daily as a single dose. More than 50 kg : upto 600 mg daily.

*Children* : 10-15 mg /kg body wt. daily as single dose.

**Presentations :** **US \$**  
1 kit 0.34 \$

**TUBERBUTOL - 400**

**Each tablets contains:**

Ethambutol.....400mg

Excipients .....q.s.

**Colour:** Approved colour used.

**Indications :** Tuberculosis.

**Dosage :** As per the physician's Advice

**Presentations :** **US \$**  
10 tablets 0.18 \$

**TIFOLIC**

**Each tablet contains:**

Folic Acid.....5 mg

Doxylamine Succinate.....10 mg

Pyridoxine Hcl.....10 mg

**Colour:** Approved colour used.

**Indications :** Tifolic is indicated in nausea and vomiting during pregnancy.

**Dosage and Administration :** 2 tablets at bedtime. If required, 1 additional tablet in the morning and 1 tablet in the afternoon.

**Presentations :** **US \$**  
10 tablets 0.42 \$

**TP-ROX-A**

**Each tablet contains:**

Roxithromycin.....150 mg

Ambroxol.....60 mg

**Colour:** Approved colour used.

**Indications :** UTI, RTI, ENT infections, skin and soft tissue infections, other infections caused by susceptible organisms.



**Fruitomin™**  
फ्रुटोमिन

**PROTEIN**  
Concentrate with Iron,  
Vitamins & Minerals

भारत में ९९% लोगों को इसकी जरूरत है

Delicious  
Mixed Fruit  
Flavour

New  
Improved  
Formula

• Product • Compositions • Indications • Dosage • Contents

**Dosage :** Adults: 150-300 mg b.i.d. 30 min before meals for 7 days.  
Children: 2.5-5 mg/kg every 12 hours for 7 days.

**Presentations :** US \$  
10 tablets 1.51 \$

**TEFAQUINE - 300 mg**

**Each tablet contains:**

Quinine Sulphate.....300 mg

**Colour:** Approved colour used.

**Indications :** Chloroquine-resistant falciparum malaria, and as alternative therapy for chloroquine-sensitive strains of P. falciparum, P. malariae, P. ovale and P. vivax.

**Dosage :** Tablets should be taken with food or after meals.

Adults : 300 mg (2 tablets) every 8 hours for 3 to 7 days.

**Presentations :** US \$  
10 tablets 1.08 \$

**TOCODER**

**Each soft-gel capsule contains:**

Vitamin E B.P.....400 mg

**Colour:** Approved colour used.

**Indication :** Vitamin E is a powerful antioxidant that works to protect cells in the body from damage caused by free radicals. Free radicals are highly reactive substances that result from normal metabolism as well as from exposure to factors in the environment like cigarette smoke and ultraviolet light. They cause damage to body cells by attacking the cell's membranes, proteins and DNA and ultimately contribute to the development of health problems such as heart disease and cancer. Vitamin E is especially important in protecting blood cells, the nervous system, skeletal muscle and the retinas in the eyes from free radical damage.

**Dosage :** As per the physician's advice.

**Presentations :** US \$  
10 soft caps 0.55 \$

**TROXIM - O (Syrup)**

**Each 5ml of reconstituted suspension contains:**

Cefixime USP as Trihydrate equivalent to  
Anhydrous Cefixime.....50 mg

**Colour:** Approved colour used.

**Indications :** Troxim-O is a semi-synthetic third generation oral cephalosporin with a broad spectrum of antibacterial activity against many Gram positive and Gram negative bacteria.

**Dosage :** Disperse one tablet in 5ml (one teaspoonful) of boiled and cooled water immediately before use

**Presentations :** US \$  
15g/30ml. Dry Syrup 1.40 \$

**TROXIM - DT - 100 mg / 200 mg**

**Each uncoated dispersible tablet contains: (100 mg)**

Cefixime USP as trihydrate equivalent to  
Anhydrous Cefixime.....100 mg

**Each uncoated dispersible tablet contains: (200 mg)**

Cefixime USP as trihydrate equivalent to  
Anhydrous Cefixime.....200 mg

**Colour:** Approved colour used.

**Indications :** Respiratory tract infections (including ear, nose and throat infections) Caused by group A beta-haemolytic Streptococci. Skin and skin structure infections Caused by Staphylococci (including coagulase-positive, coagulase-negative and penicillinase producing strains) and Streptococcus pneumoniae.

**Dosage :** Disperse one tablet in 5ml (one teaspoonful) of boiled and cooled water immediately before use.

**Presentations :** US \$  
100 mg 2.50 \$  
200 mg 3.15 \$

**TP-MOX-LB**

**Each hard gelatin capsule contains:**

Amoxicillin Trihydrate I.P.....250 mg  
(equivalent to Amoxicillin) Cloxacillin Sodium I.P.....250 mg

(Equivalent to cloxacillin) Lactic Acid Bacillus. 80 millino Spores

**Colour:** Approved colours used in empty capsule shells.

**Indications :** Lower respirator tract, skin and soft tissue, urinary tract and post-operative infections. Osteomyelitis, gynaecological, serious infections like septicaemia, bacterial endocarditis, brain abscess and bacterial meningitis.

**Dosage :** Adults : 500 mg-1g of combination thrice daily.

Children : 50-100mg/kg body -wt. daily in 3 divided doses.

**Presentations :** US \$  
3 capsules 0.87 \$

**TRIAMUNE**

**Each tablet contains :**

Nevirapine..... 200 mg

Lamivudine .....150 mg

Stavudine..... 30 mg

**Colour:** Approved colour used.

**Indications :** Progressive or advanced HIV infection, in combination with atleast 2 other antiretroviral drugs.

**Dosage :** Adult: 200mg once daily for first 14 days and if no rash appears increase to 200mg twice daily.

Children: 2 months-8 years: 4mg/kg once daily for first 14 days and then if no rash 7mg/kg twice daily (maximum:400mg daily) 8-16 years (below 50kg): 4mg once daily for 1st 14 days and then if no rash, 4mg twice daily (maximum: 400mg daily) Over 50kg: Adult dose.

**Presentations:** US \$  
30 tablets 13.40 \$  
60 tablets 15.02 \$

**THYRONIM**

**Each uncoated tablet contains :**

Thyroxine Sodium IP

equivalent to anhydrous Thyroxine Sodium IP.....100 mcg  
(Synthetic Thyroid Hormones)

**Colour :** Quinoline Yellow WS

**Indications:** Hypothyroidism, Cretinism, non-toxic goitre, myxoedema, coma.

**Dosage :** As per the physician's advice.

**Presentations:** US \$  
100 tablets 2.15 \$

**ULTERIA**

**Each tablet contains :**

Artesunate .....50 mg

**Indications :** Cerebral malaria, Chloroquine resistant malaria, Plasmodium falciparum malaria, Severe malaria.

**Dosage :** Adults: Total oral dose of 600mg is recommended which can be divided into two tab. (100mg) bd on the first day followed by 1 tab. (50mg) bd for next four days.

Children: Half the adult dose in the above manner.

**Presentations :** US \$  
4 tablets 2.22 \$

# Lincozin™

Lincomycin 250 / 500 mg tablets

The mode of action of lincomycin is the inhibition of protein synthesis by the inhibition of the binding of aminoacyl sRNA to the messenger ribosome complex at the 50S ribosomal unit.

## • Product • Compositions • Indications • Dosage • Contents

### ZENTIC-400

#### Each tablet contains:

Albendazole.....400 mg

**Colour:** Approved colour used.

**Indications :** ZENTIC-400 is indicated in the treatment of hookworm (ancylostoma, necator), roundworm (ascaris), threadworm (strongyloides), whipworm (trichuris), tapeworm (taenia species), opisthorchis, hydatid disease (echinococcus), neurocysticercosis, mixed helminthic infestations.

**Dosage :** Adults and children over two years: 1 tablet or 10 ml suspension (400 mg) as a single dose. In strongyloides or H. nana infestations, 1 tablet or 10 ml suspension once daily for 3 days.

**Children (1-2 years):** One half tablet or 5 ml suspension (200 mg) as a single dose. The tablet must be chewed, swallowed or crushed and mixed with food.

**Presentations :** **US \$**  
1 tablet 0.28 \$

### ZEVADEX

#### Each capsule contains:

Zinc sulfate monohydrate USP.....41.4 mg  
(Equivalent to 15mg of elemental zinc)

Thiamine Mononitrate I.P.....10 mg

Vitamin B2 I.P.....10 mg

Nicotinamide I.P.....100 mg

Vitamin B6 I.P.....3.0 mg

Vitamin B12 I.P.....15.0 mcg

Calcium Pantothenate I.P.....50 mg

Vitamin C I.P.....150 mg

Folic Acid I.P.....500 mcg

Biotin USP.....100 mcg

**Colours:** Erytarosine, Brilliant Blue FCF Tartrazine Sunset Yellow FCF and Titanium Dioxide in empty capsule shells.

**Indications :** Zevadex can simplify the process of taking individual B vitamins for a range of ailments including alcoholism, depression, diabetes, hair problems, lupus, multiple sclerosis, and stress.

**Dosage :** As per the physician's advice.

**Presentations :** **US \$**  
15 caps. 0.23 \$

### ZEDVIN-C

#### Each capsule contains :

Zidovudine USP .....100 mg

**Colour:** Approved colour used.

**Indications :** Zedvin-C as part of combination therapy is indicated for the treatment of HIV infection when antiretroviral therapy is warranted. Maternal-Fetal HIV Transmission: Zedvin-Cis also indicated for the prevention of maternal-fetal HIV transmission. The safety of zidovudine for the mother or foetus during the first trimester of pregnancy has not been assessed.

**Dosage :** As per the physician's advice.

**Presentations :** **US \$**  
10 caps. 1.38 \$

### ZEDVIN-T

#### Each tablet contains :

Zidovudine USP.....300 mg

**Colour:** Approved colour used.

**Indications :** Zedvin-T as part of combination therapy is indicated for the treatment of HIV infection when antiretroviral therapy is warranted. Maternal-Fetal HIV Transmission: Zedvin-T is also indicated for the prevention of maternal-fetal HIV transmission. The safety of zidovudine for the mother or foetus during the first trimester of pregnancy has not been assessed.

**Dosage :** As per the physician's advice.

**Presentations :** **US \$**  
10 tablets 3.32 \$

### ZITHROMIN - 100 ml / 200 ml (Syrup)

#### Each 5ml contains: (100 mg)

Azithromycin Dihydrate USP

Equivalent to Azithromycin.....100mg

Flavoured syrupy base.....q.s.

#### Each 5ml contains: (200 mg)

Azithromycin Dihydrate USP

Equivalent to Azithromycin.....200mg

Flavoured syrupy base.....q.s.

**Colour:** Approved colour used.

**Dosage :** As per the Physician's advice

**Indication:** Azithromycin ( Brand Name Zithromin) is an antibiotic used to treat certain infections caused by bacteria, such as pneumonia; venereal disease (VD); and ear, lung, skin, and throat infections.

**Presentations :** **US \$**  
100 ml. 0.62 \$  
200 ml. 0.98 \$

### ZITHROMIN - 250mg / 500 mg

#### Each tablet contains: (250 mg)

Azithromycin.....250mg

#### Each tablet contains: (500 mg)

Azithromycin.....500mg

**Dosage :** As per the Physician's advice

**Colour:** Approved colour used.

**Indication:** Azithromycin ( Brand Name Zithromin) is an antibiotic used to treat certain infections caused by bacteria, such as pneumonia; venereal disease (VD); and ear, lung, skin, and throat infections.

**Presentations :** **US \$**  
250 mg. 6Tabs. 1.10 \$  
500 mg. 3Tabs. 2.50 \$



### ALPHEN

#### Each Injection contains:

Melphalan .....50 mg

**Indications :** Breast carcinoma, multiple myeloma, advanced ovarian carcinoma, other neoplasms in combination with surgery. Malignant melanoma, polycythaemia vera.

**Dosage :** Adults: Multiple myeloma: Usual oral dose 6mg/day. Maintenance dose 2mg/day.

Children: Multiple myeloma: 0.15mg/kg/day for 7 days. Maintenance dose 0.05mg/kg/day when WBC/platelets count are rising. Ovarian carcinoma: 0.2mg/kg/day for 5 days. Repeat course after 4-5 weeks.

**Presentations:** **US \$**  
41.52 \$

### ARTEMOTIAL

#### Each 2ml contains:

α-B Arteether ..... 150 mg

Arachis Oil I.P. ....q.s.

**Indications :** Artemotial is concentrated in parasitized erythrocytes.

# Worldwide Gyna Products

(Trusted by Women all over the India.)

Fungicidal, Bactericidal, Trichomonacidal

## GYNASAFE™

Vaginal Suppositories

Clindamycin 100 mg & Clotrimazole 100 mg

Soft Gel Capsules



Levonorgestrel Tablets

## GYNAPILL™

Emergency Contraceptive Pills

### Introducing Gynapill Emergency Contraceptive Pills

There are moments when one becomes careless and things go out of control which leads to unwanted and unplanned pregnancy NOT ANY MORE...

Gynapill morning after pill helps you to tackle mistakes positively.

It helps to prevent unwanted pregnancy in case of sexual intercourse without contraception or incidents of contraceptive failure. Should be used within 72 hrs. after intercourse.

### GYNANOL™

Each 1gm contains

vaginal cream, 2% contains butoconazole nitrate 2%,

**Dosage :** As per the Physician's advice

**Indication:** Gynazole (butoconazole nitrate) vaginal cream, 2% is indicated for the local treatment of vulvovaginal candidiasis (infections caused by *Candida*).

### FANTIZOLE™

Each uncoated tablet contains :

Fluconazole I.P. ....150 mg

**Indications :** Fantizole is used to treat fungal infections, including yeast infections of the vagina, mouth, throat, oesophagus (tube leading from the mouth to the stomach) abdomen (area between the chest and waist), lungs, blood, and other organs. Fantizole is also used to treat meningitis (infection of the membranes covering the brain and spine) caused by fungus.

**Dosage :** As per the physician's advice.



## Complete care for women

Trichomoniasis, Candida Vulvitis, Vaginal Mycoses, Vaginal Candidiasis (Moniliasis), Bacterial Vaginitis, Infective Leucorrhoea, Mixed infections and Non-Specific Vaginitis.



**Sex may not be the most important thing in life.  
But to most men, it's up there.**

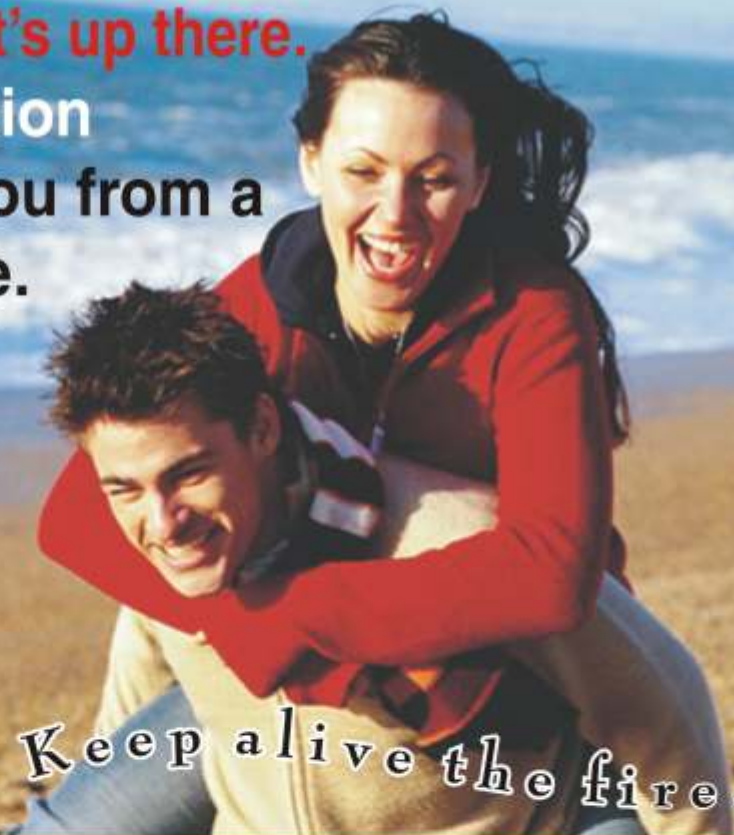
**So don't let erection  
problems keep you from a  
satisfying sex life.**

Tadalafil Tablets  
**Tiagra**<sup>®</sup>

Sildenafil Citrate Tablets  
**Neogra**<sup>®</sup>

Vardenafil Tablets  
**LEVIGRA**<sup>®</sup>

*Keep alive the fire...*



### ANTI MALARIA PRODUCTS

**No 1**  
Brands In  
The India

**Malaria kills more than  
a million peoples every year.**

**But a dose of Tefaquine/Mexoquine  
can save their lives,**

ANTI-MALARIA TABLET  
**MEXOQUINE**  
Mefloquine HCL 250 mg tablet


ANTI-MALARIA TABLET  
**TEFAQUINE**  
Quinine Sulphate 300 mg tablet

ANTI-MALARIA INJECTION  
α-β Arteether  
**Artemotial**  
Arachis Oil Injection  
150 mg/2ml.

**BRANDS YOU  
CAN TRUST**

**THE ONLY SINGLE DOSE  
THERAPY FOR MALARIA**



	<h2 style="color: red; margin: 0;">NORVATE -5™</h2> <p style="margin: 0;">Amlodipine Besilate 5mg</p>	<ul style="list-style-type: none"> <li>✓ Coronary Artery Disease</li> <li>✓ Hypertension &amp; IHD</li> <li>✓ High blood pressure</li> </ul>	<h2 style="color: red; margin: 0;">NORVATE -10™</h2>
For High Blood Pressure, Hypertension & Coronary Artery Disease (CAD)			

**• Product • Compositions • Indications • Dosage • Contents**

The functional group responsible for anti-malarial activity of a / β arteether is endoperoxide bridge. Iron from the digested haemoglobin of the parasite's victim reduces this bridge, releasing a highly reactive free radical iron species which causes lysis of the parasitic cell.

**Dosage :** *Adult* : 150mg i.e. 1 ampoule of b arteether once daily for 3 consecutive days.

*Children* : 3mg/Kg per day administered by intramuscular injection over a 3-day period.

**Presentations :** **US \$**  
2 ml. 2.15 \$

**BENOTOL - 5ml/10ml (Ear Drops)**

Paradichlorobenzene.....	2 %
Benzocaine.....	2.7 %
Chlorbutol.....	.5%
Terpentine Oil.....	15%

**Indications :** Benotol is used in the ear to help relieve the pain, swelling, and congestion of some ear infections. It will not cure the infection itself. An antibiotic will be needed to treat the infection.

**Dosage :** As per the physician's advice.

**Presentations :** **US \$**  
0.52 \$

**Bactram ( β-lactam Products)**

**Each β-lactam sterile dry powder injection contains:**

Cefotaxime.....	750 mg
Sulbactam.....	1500 mg

**Indications :** Used in surgical prophylaxis, meningitis, skin & soft tissue infections like cellulitis, chronic suppurative bacterial otitis media, cholecystitis, sexually transmitted disease, Urinary tract infections, infections in dialysis unit.

**Dosage :** As per the physician's advice.

**Presentations :** **US \$**  
2.35 \$

**CEPOKEM**

**Each Injection contains:**

Cefuroxime Sod. I.P.....	250 mg
Cefuroxime Sod. I.P.....	750 mg

**Indications :** Cefuroxime is used to treat certain infections caused by bacteria, such as bronchitis; gonorrhea; Lyme disease; and infections of the ears, throat, sinuses, urinary tract, and skin. Cefuroxime is in a class of medications called cephalosporin antibiotics. It works by stopping the growth of bacteria. Antibiotics will not work for colds, flu, or other viral infections.

**Dosage :** Adults: The usual adult dosage range for Cepokem is 750 mg to 1.5 grams every 8 hours, usually for 5 to 10 days.

**Presentation :** **US \$**  
250 mg 1.04 \$  
750 mg 2.64 \$

**CEFOZONE - 1 gm**

**Each vial contains:**

Sulbactam Sodium USP equivalent to Sulbactam .....	0.5 mg
Cefoperazone Sodium USP equivalent to Cefoperazone.....	0.5 mg

**Indications :** It is indicated in the treatment of the following infections caused by sensitive bacteria: upper / lower respiratory tract infections, upper / lower urinary tract infections, cholecystitis, peritonitis, choleic tract infections and other celiac infections, meningitis, septicaemia, skin and soft tissue infections, pelvic inflammatory disease, bone and joint infections, gonorrhea and other genital system infections.

**Dosage :** As per the physician's advice.

**Presentations :** **US \$**  
4.68 \$

**CLAMOXYN - 150 mg**

**Each Injection contains:**

Amoxicillin Sodium.....	250 mg
Clavulanate Potassium .....	50 mg

**Indications :** Clamoxin is an antibiotic in the class of drugs called penicillins. Amoxicillin and clavulanate potassium fights bacteria in the body. Clamoxin is used to treat many different types of bacterial infections, such as sinusitis, pneumonia, ear infections, bronchitis, urinary tract infections, and infections of the skin.

**Dosage :** As per the physician's advice.

**Presentations :** **US \$**  
1.09 \$

**CLEODIN - 2ml.**

**Each Injection contains:**

Inj. Clindamycin HCl 2 ml Amp.....	150 mg/ml
------------------------------------	-----------

**Indications :** Cleodin is an antibiotic or anti-infective. It treats serious blood, bone, joint, lung, urinary tract, or pelvic infections.

**Dosage :** As per the physician's advice.

**Presentations :** **US \$**  
2 ml. 1.09 \$

**DURALIN (Sex Hormones Injection)**

**Each Injection contains: (25 - 1ml. Amp.)**

Nandrolone Phenylpropionate I.P.....	25 mg/ml.
--------------------------------------	-----------

**Each Injection contains: (50 - 1 ml. Amp.)**

Nandrolone Phenylpropionate I.P.....	50 mg/ml.
--------------------------------------	-----------

**Indications :** Deca Duralin has for a long time been the drug of choice for body builders and strength athletes because of its ability to quickly add muscle, decrease body fat levels and relieve joint problems. It is also believed to have fewer undesirable side effects than other anabolic steroids.

**Dosage :** As per the physician's advice.

**Presentations :** **US \$**  
25 - 1ml. Amp. 1.35 \$  
50 - 1ml. Amp. 2.02 \$

**DECA DURALIN (Sex Hormones Injection)**

**Each Injection contains: (25 - 1ml. Amp.)**

Nandrolone Decanoate I.P. ....	25 mg
Ethyl oleate I.P.....	q.s.

**Each Injection contains: (50 - 1ml. Amp.)**

Nandrolone Decanoate I.P. ....	50 mg/ml
--------------------------------	----------

**Indications :** Deca Duralin has for a long time been the drug of choice for bodybuilders and strength athletes because of its ability to quickly add muscle, decrease body fat levels and relieve joint problems. It is also believed to have fewer undesirable side effects than other anabolic steroids.

**Dosage :** As per the physician's advice.


**Presentations :** **US \$**  
25 - 1ml. Amp. 1.85 \$  
50 - 1ml. Amp. 2.02 \$

**DEFLOXINE - 5 ml. / 10 ml. (Ear & Eye drops)**

**Ear/Eye Drops 5ml & 10ml**

Ofloxacin 0.3% + Dexamethasone.....	0.1%
-------------------------------------	------


**Indications :** Defloxine is an antibiotic. Defloxine kills certain bacteria or stops their growth. It treats urinary tract, prostate, skin, urinary and



# Tocoder-400™

## Vitamin E Capsules

- ☞ Vitamin E is an anti-oxidant that protects body cells from destruction by preventing them from reacting with oxygen.
- ☞ It is a natural, non-toxic blood thinner, preventing clots from forming in your blood so you don't get heart attacks or strokes.
- ☞ Vitamin E also allows muscle cells to function effectively on small amounts of oxygen. This can boost your energy level.



**• Product • Compositions • Indications • Dosage • Contents**

respiratory tract infections, as well as certain sexually transmitted diseases.

**Dosage :** As per the physician's advice.

**Presentations :** **US \$**  
0.40 \$

**EMETRON**

**Each Injection contains:**

Ondansetron 2ml Amp.....2mg/ml

**Indications :** Emetron helps to relieve nausea and vomiting, especially when associated with the treatment of cancer (chemotherapy). Ondansetron may also be used to prevent or treat nausea and vomiting that occurs after surgery, and occasionally is used to treat severe vomiting during pregnancy.

**Dosage :** As per the physician's advice.

**Presentations :** **US \$**  
2 ml. 0.65 \$

**ENBROL**

**Each 1 ml contains :**

Etanercept .....25 mg

**Indications :** For reducing signs and symptoms and inhibiting the progress of structural damage in patients with moderately to severely active rheumatoid arthritis. In combination with methotrexate in patients who do not respond to methotrexate alone. To reduce symptoms and signs of moderately to severely active poly-articular-course juvenile rheumatoid arthritis (JRA) in patients who have had an inadequate response to one or more DMARDs.

**Dosage :** Adults: 25mg given twice weekly as a subcutaneous injection 72-96 hours apart. Methotrexate, glucocorticoids, NSAIDs, or analgesics may be continued during treatment with etanercept. JRA patients: For paediatric patients (4 to 17 years), dose is 0.4mg/kg (up to a maximum of 25mg per dose) given twice weekly as a subcutaneous injection 72-96 hours apart. Glucocorticoids, NSAIDs, or analgesics may be continued during treatment with etanercept.

**Presentations :** **US \$**  
Vial 1 ml. 196.68 \$

**GENTABET- 5ml (Ear Drops)**

**Each 1ml contains:**

Gentamicin I.P..... 0.3% w/v  
 Clotrimazole.....1% w/v  
 Betamethasone Depropionate U.S.P.....0.025% w/v  
 Lignocaine HCL.....2% w/v  
 In glycerin I.P & Propylene Glycol I.P.....q.s.

**Indications :** Gentabet can cause severe hearing and kidney problems. Gentabet eliminates bacteria that cause many kinds of infections, including lung, skin, bone, joint, stomach, blood, and urinary tract infections.

**Dosage :** As per the physician's advice.

**Presentations :** **US \$**  
5 ml. 0.20 \$

**LINCOZIN - 1ml. Amp**

**Each 1 ml. Injection contains:**

Lincomycin Hydrochloride I.P.....300 mg/ml  
 equivalent to Lincomycin base.....300 mg/ml.  
 Benzyl Alcohol I.P. '85 ..... 9 mg.  
 Water for injection I.P. .... q.s.

**Indications :** Lincozin HCL is an antibiotic or anti-infective. It treats serious blood, lung, skin, tissue or pelvic infections caused by bacteria.

**Dosage :** As per the physician's advice.

**Presentations :** **US \$**  
1ml. Amp. 1.63 \$

**LINCOZIN - 30 ml Vial**

**Each Injection contains:**

Lincomycin.....300 mg/ml

**Indications :** Lincozin is an antibiotic or anti-infective. It treats serious blood, lung, skin, tissue or pelvic infections caused by bacteria.

**Dosage :** As per the physician's advice.

**Presentations :** **US \$**  
2.30 \$

**METHYAMIN**

**Each ml contains:**

Methylcobalamine.....500 mcg  
 Benzyl Alcohol IP.....2% w/v  
 (as preservative)  
 Water for injection I.P.....q.s.

Overages are added to compensate for loss on storage.

**Indications :** Evidence indicates Methyamin is utilized more efficiently than cyanocobalamine to increase levels of one of the coenzyme forms of vitamin B12.

**Dosage :** As per the physician's advice.

**Presentations :** **US \$**  
500 mcg 0.54 \$

**METHERLIN**

**Each ml contains:**

Methylergometrine Maleate IP.....0.2 mg  
 Water for injection IP.....q.s.

**Indications :** Oral: Post-partum, haemorrhage, uterine atony, menorrhagia, menopausal haemorrhage, stubborn & prolonged uterine inertia. In association with caesarean section, following abortion, lochiometra, puerperal bleeding.

**Dosage :** As per the physician's advice.

**Presentations :** **US \$**  
0.60 \$

**MEROKEM**

**Each 1ml contains :**

Meropenem .....1 g  
 Meropenem .....500 mg

**Indications :** Intra-abdominal infections, nosocomial pneumonia, septicaemia, cystic fibrosis, meningitis, febrile neutropenia.

**Dosage :** Intra-abdominal infections; nosocomial pneumonia; septicaemia: *Adults:* 500mg-1g hrly depending on the severity and type. IV infusion, over approx. 15 to 30 minutes or as an intravenous bolus injection (5 to 20 mL) over approximately 3-5minutes.

*Child:* (3 months to 12 yrs): IV 10 to 40mg/kg 8hrly, or as reqd. Cystic fibrosis; meningitis: *Adults:* 2g 8 hrly. Febrile neutropenia: 1g 8 hrly.

**Presentations :** **US \$**  
Vial 1 ml 42.60 \$

**NEUROVITAL FORTE**

**Each 3ml ampoule contains:**

Thiamine Hydrochloride IP .....100 mg  
 Riboflavine Sodium Phosphate IP .....5 mg  
 Pyridoxine Hydrochloride IP .....100 mg  
 Cyanocobalamin IP .....1000 mcg  
 Niacotinamide IP .....100 mg  
 D-Panthenol IP .....50 mg  
 Benzyl Alcohol IP .....1% w/v  
 (as preservative)

# Femidin™

Famotidine 20 / 40 mg Tablets

**Femidin** is used to to treat ulcers (sores on the lining of the stomach or small intestine); gastroesophageal reflux disease.

• Product • Compositions • Indications • Dosage • Contents

Water for Injection IP .....q.s.

**Indications :** It may be useful in the nutritional management of patients during prolonged convalescence associated with major surgery. It is also indicated for stress conditions, as an adjunct to antibiotics and diuretic therapy, pre and post operative cases, liver conditions, gastrointestinal disorders interfering with intake or absorption of water-soluble vitamins, prolonged or wasting diseases, diabetes, burns, fractures, severe infections, and some psychological disorders.

**Dosage :** As per the physician's advice.

**Presentations :** **US \$**  
 3 ml 0.18 \$

**PARACIN**

**Each ml. Contains:**

Paracetamol IP.....150mg  
 Benzyl AlcoholIP.....1%  
 Lignocaine Hcl. IP.....1%

**Indications:** For Relief from Pyrexia of unknown origin or that resulting from Upper / Lower Respiratory tract infection like tonsillitis, bronchitis, Pharyngitis & pneumonia. For prevention of Febrile convulsion.

**Dosage:** *Adult & Children:-* 2ml. To be injected deep I.M. Every 4-6 hours.

**Presentations :** **US \$**  
 10 Vile 1.76 \$  
 1 Voile 0.18 \$

**PANADOL**

**Each ml. Contains:**

Paracetamol IP.....150mg  
 Benzyl AlcoholIP.....1%  
 Lignocaine Hcl. IP.....1%

**Indications:** For Relief from Pyrexia of unknown origin or that resulting from Upper/ Lower Respiratory tract infection like tonsillitis, bronchitis, Pharyngitis & pneumonia. For prevention of Febrile convulsion.

**Dosage:** *Adult & Children:-* 2ml. To be injected deep I.M. Every 4-6 hours.

**Presentations :** **US \$**  
 10Vile 1.78 \$  
 1Voile 0.19 \$

**PROTOZOLE**

**Each Injection contains:**

Pantoprazole .....40 mg

**Indications :** Protozole reduces the amount of acid in the stomach and duodenum. This helps to heal peptic ulcers and helps to prevent them from recurring. It also helps to relieve the symptoms of reflux oesophagitis.

**Dosage :** As per the physician's advice.

**Presentation :** **US \$**  
1.15 \$

**REXIPRO**

**Each Vial 5ml contains :**

Abciximab .....2 mg

**Indications :** Platelet aggregation inhibition as adjunct to percutaneous transluminal coronary angioplasty or atherectomy (PTCA).

**Dosage :** 0.25 mg/kg administered 10-60 minutes before the start of PTCA followed by a continuous I.V.. injection of 10 mcg/min. for 12 hours.

**Presentations :** **US \$**  
 Vial 5ml 427. 13 \$

**SETRAXONE 375 mg**

**Each vial contains:**

Ceftriaxone Sodium U.S.P.  
 Equivalent to Ceftriaxone.....250 mg  
 Sulbactam Sodium U.S.P.  
 Equivalent to Sulbatcam .....125 mg

**Indications :** Setraxone is a cephalosporin antibiotic. It treats many kinds of infections, including those of the skin, bone, stomach, brain, blood, respiratory tract, sinuses, ear, and urinary tract. Setraxonee also treats some sexually transmitted diseases.

**Dosage :** As per the physician's advice.

**Presentations :** **US \$**  
1.09 \$

**TERACORT- 1ml. Vial**

**Each Injection contains: ( 10 of 1 ml. Vial)**

Triamcinolone Acetonide I.P.....10mg/ml  
 Each Injection contains: (40 of 1 ml. Vial)

Triamcinolone Acetonide I.P. ....40mg/ml  
**Indications :** Teracort is used to treat the itching, redness, dryness, crusting, scaling, inflammation, and discomfort of various skin conditions. It is also used to relieve the discomfort of mouth sores.

**Dosage :** As per the physician's advice.

**Presentations :** **US \$**  
 10 of 1ml. Vial 0.60 \$  
 40 of 1ml. Vial 1.15 \$

**TERACORT- 5ml**

**Each Injection contains:**

Triamcinolone Acetonide Inj..... 6 mg/ml

**Indications :** The injectable corticosteroid suspensions are used to treat endocrine disorders, rheumatic disorders, collagen diseases, allergic states, ophthalmic diseases, gastrointestinal diseases, respiratory diseases, dermatological diseases, Hematologic disorders, neoplastic disorders, edematous states, nervous system disorders, tuberculous meningitis, and trichinosis with neurologic or myocardial involvement.

**Dosage :** As per the physician's advice.

**Presentations :** **US \$**  
2.30 \$

**TRANEXA**

**Each Injection contains:**

Tranexamic Acid 5ml Amp. ....100 mg/ml

**Indications :** To control haemorrhage in: Epistaxis, haemoptysis, haematemesis, melena, menorrhagia, post-surgical conditions.

**Dosage :** As per the physician's advice.

**Presentations :** **US \$**  
 5 ml 0.85 \$

**ULTERIA**

**Each injection contais :**

Artesunate.....50 mg

**Indications:** Cerebral malaria, Chloroquine resistant malaria, Plasmodium falciparum malaria, Severe malaria.

**Dosage:** As per the physician's advice.

**Presentations :** **US \$**  
 1 vial 3.68 \$

**ZENTROM**

**Each ml contains. (500 mg)**

Aztreonam.....500mg

**Each ml contains. (250 mg)**

# TROXIM-O

## DRY SYRUP

Cefixime USP as Trihydrate equivalent to Anhydrous Cefixime 50 mg.



• Product • Compositions • Indications • Dosage • Contents

Aztreonam.....250mg

**Each ml contains. (1 g)**

Aztreonam.....1gm

**Each ml contains. (2 g)**

Aztreonam.....2gm

**Indications:** Aztreonam is used to treat a wide variety of bacterial infections. This medication is an antibiotic that works by stopping the growth of bacteria. This antibiotic only treats bacterial infection. It will not work for viral infections (e.g., Common cold, flu). Unnecessary use or overuse of any antibiotic can lead to its decreased effectiveness.

**Dosage:** As Per Physicians Advice

**Presentations :**

500 mg	US \$ 6.26 \$
250mg	3.45 \$
1gm	3.26 \$
2gm	18.58 \$

### ZEVADEX - B-COMPLEX INJECTION

**After reconstitution, each ml contains:**

Thiamine Hydrochloride I.P.....	90.9 mg
Riboflavine Phosphate Sodium I.P	
equivalent to Riboflavine I.P.....	4.5 mg
Pyridoxine Hydrochloride I.P.....	4.5 mg
Niacinamide I. P.....	90.9 mg
D-Panthenol I.P.....	9.1mg
Choline Chloride.....	9.1mg
DL-MethionineB.P.....	9.1mg
Inositol.....	4.5 mg
Vitamin B12 I.P.....	90.9 mcg
Benzyl Alcohol I. P. 85.....	2.86% v/v
(Preservative)	
Chlorocresol I. P.....	0.09% w/v
(Preservative)	
Water for Injection I. P.....	q.s.

Appropriate overages added

**Indications :** To prevent and treat isoniazid, hydralazine and cycloserine induced neurological disturbances. Mental symptoms in women on oral contraceptives. Neuropathies. Subacute combined degeneration. Beriberi. Anaemia, hepatitis, debility.

**Dosage :** As per the physician's advice.

**Presentations :**

US \$
0.43 \$



### HERBAL PRODUCTS



### ANOMIN POWDER (ANEMIA POWDER)

**Each 400 gm. contains:**

Vasa (Adhatoda vasica).....	148 gm
Tulsi (Ocimum santum).....	20 gm
Jambolan (Eugenia Jambolane).....	20 gm
Ginger (Zingiber officinale).....	20 gm
Haridra (Curcuma Longal).....	22 gm
Bow rasa (Archetto (musica)).....	15 gm
Halite (Natrium).....	70 gm
Sodium bicarbonate (Natron).....	85 gm
Magnesium stearate (Dryer).....	q.s.

**Indications :** useful in all kinds of Anaemic diseases.

**Dosage :** 2 spoons at a time, 3 times a day or as directed by the Physician.

**Presentations :**

400 gm.	US \$ 11.84 \$
---------	----------------

### ANOMIN CAPSULES (ANEMIA CAPSULES)

**Each 500 mg. capsule contains:**

Vasa (Adhatoda vasica).....	65 mg
Tulsi (Ocimum santum).....	25 mg
Jambolan (Eugenia Jambolane).....	25 mg
Ginger (Zingiber officinale).....	25 mg
Haridra (Curcuma Longal).....	25 mg
Bow rasa (Archetto (musica)).....	25 mg
Halite (Natrium).....	85 mg
Sodium bicarbonate (Natron).....	125 mg
Magnesium stearate (Dryer).....	q.s.

**Indications :** useful in all kinds of Anaemic diseases.

**Dosage :** 2 capsules 3 times a day or as directed by the Physician

**Presentations :**

90 Caps.	US \$ 8.61 \$
----------	---------------

### ANOMIN SYRUP (ANOMIN SYRUP)

**Each 100 ml. contains:**

Vasa (Adhatoda vasica).....	22 mg
Tulsi (Ocimum santum).....	8 mg
Jambolan (Eugenia Jambolane).....	2 mg
Ginger (Zingiber officinale).....	12 mg
Haridra (Curcuma Longal).....	15 mg
Bow rasa (Archetto (musica)).....	15 mg
Halite (Natrium).....	15 mg
Sodium bicarbonate (Natron).....	5 mg
Magnesium stearate (Dryer).....	q.s.

**Indications :** useful in all kinds of Anaemic diseases.

**Dosage :** Children 2-12 yrs.: 1 spoons with water at a time, 3 times a day or as directed by the Physician.

**Presentations :**

100 ml. bottle	US \$ 3.15 \$
----------------	---------------

### ANTI ARTHRITIS (HERBAL CAPSULE)

**Each 500 mg capsule contains**

**Compositions :** Rasana Ext. Shallaki Niryasa Ext., Shuddha shilajith Ext. Shuddha Guggula Ext., Bala Ext., Nirgundi Ext., Aswagandha Ext., Vishwabhashaja., Ext., Nagakesara

**Indications :** For Anti-Rheumatic

**Dosage :** 1-2 Capsules twice a day or as a physician advice.

**Presentations :**

30's Pack	US \$ 0.98 \$
60's Pack	1.95 \$
90's Pack	2.93 \$

### BLUDCOR POWDER (BLOOD POWDER)

**Each 400 gm. contains:**

Vasa (Adhatoda vasica).....	185 gm
Tulsi (Ocimum santum).....	40 gm
Haridra (Curcuma Longal).....	25 gm
Bow rasa (Archetto (musica)).....	25 gm
Halite (Natrium).....	75 gm
Sodium bicarbonate (Natron).....	90 gm
Magnesium stearate (Dryer).....	q.s.

**Indications :** useful in all kinds of Blood diseases.

**Dosage :** 1 spoons at all time, 3 times a day or as directed by the Physician.

**Presentations :**

400 gm.	US \$ 10.54 \$
---------	----------------

### BLUDCOR CAPSULES (BLOOD CAPSULES)

**Each 500 mg. contains:**

Vasa (Adhatoda vasica).....	125 mg
Tulsi (Ocimum santum).....	50 mg

**ANTI-MALARIA TABLET**  
**TEFAQUINE**<sup>TM</sup>  
(QUININE SULPHATE I.P. 300 mg TABLETS U.S.P)

**THE ONLY SINGLE DOSE THERAPY FOR MALARIA**

The quick sure answer to resistant Malaria case

- SINGLE DOSE therapy
- Attacks different stages of development of parasites
- Curative & Prophylactic actions
- Effective concentration for 4 weeks



**• Product • Compositions • Indications • Dosage • Contents**

Haridra (Curcuma Longal).....	25 mg
Bow rasa (Archetto (musica)) .....	25 mg
Halite (Natrium) .....	75 mg
Sodium bicarbonate (Natron) .....	100 mg
Magnesium stearate (Dryer) .....	q.s.

**Indications :** Useful in all kinds of Blood diseases.

**Dosage :** 2 capsules at a time, 3 times a day or as directed by Physician

<b>Presentations :</b>	<b>US \$</b>
90 Caps.	8.26 \$

**BLUDCOR SYRUP (BLOOD SYRUP)**

**Each 100 ml. contains:**

\*Aqueous extract derived from:

Vasa (Adhatoda vasica).....	40 mg
Tulsi (Ocimum santum).....	8 mg
Haridra (Curcuma Longal) .....	5 mg
Bow rasa (Archetto (musica)) .....	5 mg
Halite (Natrium) .....	7 mg
Sodium bicarbonate (Natron) .....	10 mg
Magnesium stearate (Dryer) .....	q.s.

**Indications :** Useful in all kinds of Blood diseases.

**Dosage :** Children 2-12 yrs.: 1 spoons with water at a time, 3 times a day or as directed by the Physician.

<b>Presentations :</b>	<b>US \$</b>
100 ml.	2.98 \$

**BREASTONIC**

**Each 10 gm contains:**

<b>Compositions :</b> Anar ka Chilka .....	1.00 gm
Gangeran .....	2.00 gm
Dalchini.....	800 mg
Fitkari.....	700 mg
Maju.....	2.00 gm
Bach Ext.....	10.00 mg
Base.....	q.s.

**Indications :** Breast tonic for women.

**Usage :** Take 2-3 drops of Breastonic Oil and apply it gently on dried breast, Massage them from lower to upper side in circular motion for 3-5 minutes in morning or evening. Do not wash it for next 2 hrs. after applications.

<b>Presentations :</b>	<b>US \$</b>
120 ml	3.58 \$

**CHYAWANPRASH SPECIAL**

**Compositions :** Amla, Aswagandha, Hareetaki, Dashmul, Ghrit and several other herbs.

*Chyawanprash healthier life begins :* Derived from 2500 year old Ayurvedi formula. Totally chemical-free, natural and safe. Powerful combination of herbs and plant extracts in a base of Amla fruit pulp. Refined by Taj to provide traditional goodness with best quality. Reinforces the immune system & helps flight disease. Trusted health provider of a majority of Indian households.

**Usage :** Chyawanprash Special has tangy sweet-sour tasted and the consistency of jam. It can be taken directly or in milk and as bread spread. In all cases its therapeutic properties have proven to remain stable and active.

**Dosage:** 1-2 teaspoonful.

<b>Presentations :</b>	<b>US \$</b>
250 gms	1.27 \$
500 gms	2.32 \$
1 kg	3.75 \$

**GASTRONE**

**Each capsule contains :**

\*Aqueous extract derived from:

Usira (Andropogon muricatus).....	50 mg
-----------------------------------	-------

Mulethi (Glycerriza glabra).....	200 mg
Shatavari (Asparagus racemosus) .....	250 mg
Kamdudha Ras .....	250 mg
Sutsekhar Ras .....	25 mg
Praval pisti (Processed coaral) .....	25 mg
Dhatri Lauh .....	25 mg

**Indications :** Hyperacidity, Gastric and Peptic ulcers, Heartburn, Colicpain, Gastritis, Burning sensation in the stomach

**Dosage :** 1-2 capsule 2-3 time a day.

<b>Presentations :</b>	<b>US \$</b>
30 Caps.	0.71 \$

**HARI TULSI KADHA (Cough Syrup)**

**Each 5ml contains:**

Vasa.....	400 mg
Haridra.....	50 mg
Kantakari.....	200 mg
Somavalli.....	50 mg
Yastimadhu.....	250 mg
Tulsi.....	100 mg
Bibhitak.....	50 mg
Virshya.....	50 mg
Bharangi.....	100 mg
Trikatu.....	90 mg
Saubhagya Pushpa.....	50 mg
Pudina Satva.....	10 mg

**Indications :** Useful in cough, cold, Asthma & upper respiratory track infections.

**Dosage :** 5-15 ml. Three times a day.

<b>Presentations :</b>	<b>US \$</b>
100 ml	0.92 \$

**HEPATIC POWDER (HEPATITIS POWDER)**

**Each 400 gm Contains:**

Vasa (Adhatoda vasica).....	148 gm
Tulsi (Ocimum santum).....	22 gm
Lavang .....	20 gm
Haridra (Curcuma Longal) .....	20 gm
Bow rasa (Archetto (musica)) .....	20 gm
Halite (Natrium) .....	90 gm
Sodium bicarbonate (Natron) .....	100 gm
Magnesium stearate (Dryer) .....	q.s.

**Indications :** Useful in all kinds of Hepatitis virus infections.

**Dosage :** 2 spoons at a time, 3 times a day or as directed by the Physician

<b>Presentations :</b>	<b>US \$</b>
400 gm.	9.70 \$

**HEPATIC CAPSULES (HEPATITIS CAPSULES)**

**Each 500 mg. capsule contains:**

Vasa (Adhatoda vasica) .....	165 mg
Tulsi (Ocimum sanctum) .....	25 mg
Lavang .....	25 mg
Haridra (Curcuma Longa) .....	25 mg
Bow rasa (Archetto (musical)) .....	25 mg
Halite (Natrium) .....	25 mg
Sodium bicarbonate (Natron) .....	125 mg
Magnesium stearate (Dryer) .....	q.s.

**Indications :** Useful in all kinds of Hepatitis virus infections.

**Dosage :** 2 capsules 3 times a day or as directed by the Physician

<b>Presentations :</b>	<b>US \$</b>
90 Caps.	3.65 \$



• Product • Compositions • Indications • Dosage • Contents

**HEPATIC SYRUP (HEPATIC SYRUP)**

Each 100 ml. contains:

Aqueous extract derived from :

Vasa (Adhatoda vasica).....	20 mg
Tulsi (Ocimum santum).....	5mg
Lavang.....	15 mg
Haridra (Curcuma Longal).....	12mg
Bow rasa (Archetto (musical)).....	10 mg
Halite (Natrium).....	25mg
Sodium bicarbonate (Natron).....	6 mg
Magnesium stearate (Dryer).....	q.s.

**Indications :** Useful in all kinds of Hepatitis virus infections.

**Dosage:** Children 2-12 yrs.: 1 spoon with water at a time, 3 Day.

<b>Presentations :</b>	<b>US \$</b>
100 ml.	2.30 \$

**HAJMA-G**

**Compositions :** Kalimirich, Zeera, Saunth, Nimbu saar, Pippali, Samudra Lavan, Sarkara, Krishnalvana, Navasadar.

**Usage :** Can be taken at any times of the day. Chewing slowly improve the taste.

**Dosage :** Adult & elderly 1-2 tablets, children 1 tablet. Hajma-G tablets taken in large dose can cause irritation in the stomach.

<b>Presentations :</b>	<b>US \$</b>
100 Tab	0.36 \$
120 Tab	0.40 \$

**HONISIP**

Each 5ml contains:

Tulsi.....	50.0 mg
Mulathi.....	50.0 mg
Banaphsa.....	50.0 mg
Kant Kari.....	50.0 mg
Talispara.....	50.0 mg
Sunthi.....	25.0 mg
Pippali.....	25.0 mg
Vasaka.....	25.0 mg
Shati.....	25.0 mg
Pudina satva.....	25.0 mg
Shudh madhu.....	3.0 mg
Flavored Syrup.....	q.s.

**Indications :** Taj Honisip is a unique blend of time tested herbs and modern pharmaceutical technology bringing out the best of both. Honisip contains nature's nutritious gift. Honey along with herbs with proven efficacy in cough. Honisip is a safe and effective cough syrup for all kinds of cough such as allergic cough, dry cough and smoker's cough. Honisip also relieves throat irritation.

**Dosage :** Children : 1 Teaspoonful 2-3 times a day;

Adults : 2 Teaspoonful 2-3 times a day, or as directed by the physicians.

<b>Presentations</b>	<b>US \$</b>
100 ml	0.95 \$

**JONDISO POWDER (JAUNDICE POWDER)**

Each 400 gm. contains :

\*Aqueous extract derived from:

Vasa (Adhatoda vasica).....	216 gm
Bow rasa (Archetto (musica)).....	50 gm
Halite (Natrium).....	100 gm
Sodium bicarbonate (Natron).....	20 gm
Magnesium stearate (Dryer).....	q.s.

**Indications :** Useful in all kinds of Jaundice infections.

**Dosage :** 2 spoon at a time, 3 times a day or as directed by the Physician

<b>Presentations :</b>	<b>US \$</b>
400 gm	8.58 \$

**JONDISO CAPSULES (JAUNDICE CAPSULE)**

Each 500 mg. capsule contains :

\*Aqueous extract derived from:

Vasa (Adhatoda vasica).....	240 mg
Bow rasa (Archetto (musica)).....	50 mg
Halite (Natrium).....	100 mg
Sodium bicarbonate (Natron).....	110 mg
Magnesium stearate (Dryer).....	q.s.

**Indications :** Useful in all kinds of Jaundice infections.

**Dosage :** 2 Capsules 3 times a day or as directed by the Physician.

<b>Presentations :</b>	<b>US \$</b>
90 Capsules	3.95 \$

**JONDISO SYRUP (JAUNDICE SYRUP)**

Each 100 ml. contains :

\*Aqueous extract derived from:

Vasa (Adhatoda vasica).....	24mg
Bow rasa (Archetto (musica)).....	25mg
Halite (Natrium).....	10mg
Sodium bicarbonate (Natron).....	11mg
Magnesium stearate (Dryer).....	q.s.

**Indications :** Useful in all kinds of Jaundice infections.

**Dosage :** Children 2-12 yrs.: 1 spoon with water at a time, 3 times a day; Adults: 2 spoons with water at a time, 3 times a day, or as directed by the Physician.

<b>Presentations :</b>	<b>US \$</b>
100 ml	2.16 \$

**JOINT PAIN KILLER**

Each capsule contains:

\* Aqueous extracts derived from:

Dashmool Kwath.....	1gm
Maharasnadi Kwath.....	1gm
Ashwagandha (Withania Somnifera).....	500mg
Ajmodadi Churna.....	250mg
Chopchini (Smilax China).....	250mg
Mahayograj Guggul.....	100mg
Vatagajankush Ras.....	25mg
Sameerpannag Ras.....	20mg

**Indications :** Arthritis, Rheumatoid Arthritis, Lumbago, Neuralgia, Sciatica, Neuritis, Joint pain and other painful Conditions of the body due to ageing process. It is well suited for both the sexes.

**Dosage :** 1 capsule, 3 times a day.

<b>Presentations :</b>	<b>US \$</b>
30 Capsules	1.65 \$

**KALI TULSI KADHA (DRY COUGH SYRUP)**

Each 5ml contains:

Vasa.....	400mg
Haridra.....	50mg
Kantakari.....	200mg
Somavalli.....	50mg
Yastimadhu.....	250mg
Tulsi.....	100mg
Bibhitak.....	50mg
Virshya.....	50mg
Bharangi.....	100mg
Fixed Carotene.....	10.33mg
Bentothiamine.....	1mg
Vitamin B6.....	1.34mg

# Asthom™

Salbutamol Sulphate IP 2 / 4 mg and  
Theophylline anhydrous IP 100 / 300 mg**Breathe easy with Asthom and Asthom Forte****• Product • Compositions • Indications • Dosage • Contents**

Vitamin B12.....	1mcg
Vitamin D3.....	200IU
Nicotinamide.....	15mg
Calcium Pantothenate.....	1mg
Calcium (as Anhydrous Calcium Hydrogen Phosphate).....	50mg
Phosphorus.....	38.75mg
Potassium.....	1mg
Copper.....	0.01mg
Magnesium.....	0.5mg
Zinc.....	0.15mg

**Indications :** Useful in Dry Cough, Cold, Asthma & upper respiratory track infections.**Dosage :** 5-15 ml. three times a day.

<b>Presentations :</b>	<b>US \$</b>
100 ml	0.87 \$

**LUKOMIN SYRUP (BLOOD CANCER SYRUP)****Each 100 ml. contains :**

Vasa (Adhatoda vasica).....	12 mg
Tulsi (Ocimum sanctum).....	7 mg
Jambolan (Eugenia jambolana).....	15 mg
Ginger (Zingiber officinale).....	15 mg
Haridra (Curcuma longa).....	25 mg
Bow rasa (Archetto (musical).....	8 mg
Halite (Natrium).....	16 mg
Sodium bicarbonate (Natron).....	27 mg
Magnesium stearate (Dryer).....	q.s.

**Indications :** Useful in all kinds of Blood Cancers.**Dosage :** Children 2-12 yrs.; 1 spoon with water at a time, 3 times a day.**Adults :** 2 spoons with water at a time, 3 times a day, or as directed by the physician.

<b>Presentations :</b>	<b>US \$</b>
100 ml.	3.80 \$

**LIVOVON POWDER (LIVER POWDER)****Each 400 gm. capsule contains :**

Vasa (Adhatoda vasica).....	175 gm
Tulsi (Ocimum santum).....	50 gm
Bow rasa (Archetto (musica)).....	25 gm
Halite (Natrium).....	85 gm
Sodium bicarbonate (Natron).....	125 gm
Magnesium stearate (Dryer).....	q.s.

**Indications :** Useful in all kinds of Liver diseases.**Dosage :** 2 spoon at a time, 3 times a day or as directed by the physician

<b>Presentations :</b>	<b>US \$</b>
400 gm	11.41 \$

**LIVOVON CAPSULES (LIVER CAPSULE)****Each 500 gm. capsule contains :**

Vasa (Adhatoda vasica).....	215 mg
Tulsi (Ocimum santum).....	50 gm
Bow rasa (Archetto (musica)).....	25 gm
Halite (Natrium).....	85 gm
Sodium bicarbonate (Natron).....	125 gm
Magnesium stearate (Dryer).....	q.s.

**Indications :** Useful in all kinds of Liver diseases.**Dosage :** 2 capsules at a time, 3 times a day or as directed by the physician.

<b>Presentations :</b>	<b>US \$</b>
90 Caps.	6.08 \$

**LIVOVON SYRUP (LIVER SYRUP)****Each 100 ml. contains :**

\*Aqueous extract derived from:

Vasa (Adhatoda vasica).....	40 mg
Tulsi (Ocimum santum).....	10 mg
Bow rasa (Archetto (musica)).....	5 mg
Halite (Natrium).....	8 mg
Sodium bicarbonate (Natron).....	12 mg
Magnesium stearate (Dryer).....	q.s.

**Indications :** Useful in all kinds of Liver diseases.**Dosage :** Children 2-12 yrs.: 1 spoon with water at a time, 3 times a day; Adults: 2 spoons with water at a time, 3 times a day, or as directed by the Physician

<b>Presentations :</b>	<b>US \$</b>
100 ml bottle	2.45 \$

**LIFECARE ISABGOL****Each Amount Contain****Compositions :** Psyllium husk (Bhussi)**Indications :** Life care Isabgol-the natural laxative for relief from constipation a diarrhea. With bigger flakes for better absorption and superior actions.Treats Chronic Constipation, Diarrhoea.**Dosage :** To Work Three time a day

<b>Presentations :</b>	<b>US \$</b>
7 gm Sachet	0.12 \$
50 gm	0.83 \$
100 gm	1.45 \$

**LIFECARE SHANKHA PUSHPI SYRUP****Compositions :** Lifecare Shankhapushpi/Brahmi Traditionally known to enhance children's intelligence.**Indications:** Lifecare Shankpushpi is a natural tonic for Mental development of children. It has been used for centuries in Ayurveda for rejuvenation nervous functions. And Lifecare Shankpushpi brings this natural remedy that completely safe and prepared under the strictest quality guideline.**Dosage :** Children 2-12 yrs.: 1 spoon with water at a time, 3 times a day; Adults: 2 spoons with water at a time, 3 times a day, or as directed by the Physician

<b>Presentations:</b>	<b>US \$</b>
100 gm	1.58 \$
200 gm	2.28 \$

**LIFECARE STRONG****Compositions :** Whey Proteins, Fat, Carbohydrates, A, Vitamin B1, B2, B6, B12, Vitamin C, D3, E,K,Biotin, Folic Acid, Iron, Zinc, etc.**Indications :** Tonic for immunity.**Dosage :** 2 Capsules daily after main meals.

<b>Presentations :</b>	<b>US \$</b>
30 Caps.	6.52 \$

**LIFECARE SKIN TONER****Each prepared out of:**

Acacia catechu.....	13 g
Albizzia lebbek.....	10 g
Azhadiracta indiace.....	10 g
Cassia fistula.....	15 g
Cassia occidentals.....	13 g
Rubia cordifolia.....	10g
Sausseria lappa.....	13g
Circuma longa.....	10g
Pongammla pinnatta.....	12g
Piper nigrum.....	5g
Psoralea corylifolia.....	13g

Just one capsule a Day

# ACTIVITAL-Z™

The dosage of essential nutrients including vitamins B1, B12, and Zinc, minerals and other trace elements cover the daily requirements of an individual.

Activital's balanced combination rejuvenates and strengthens body organs and help maintain good health.

• Product • Compositions • Indications • Dosage • Contents

Wrightia tinctora .....	25ml
Cynodon dactylon .....	25ml
Brassica juncea .....	75ml

**Indications :** Psoriasis, Other Eczematos Fungal & related Skin Disorders.

**Dosage :** To be applied externally on the affected area as directed By the Physician.

<b>Presentations :</b>	<b>US \$</b>
20 gm	1.08 \$
50 gm	2.56 \$

**OXYFLAX**

**Compositions :**

**Each soft gel capsule contains**

Processed Flax Seed Oil .....	1000 mg
-------------------------------	---------

**Indications :** Flax is a known Natural Vegetarian Source of Vitamins, Minerals, Essential Amino acids, Phenolic acids Flavonoids, Alpha & Gamma Tocopherol & Beta Carotene.

**Dosage :** 1 capsule twice a day with main meals or as directed by the physician

<b>Presentations :</b>	<b>US \$</b>
30 Caps.	3.45 \$

**PUDINA PACHAK**

**Compositions :** Pudina ka Satva

**Indications :** Pudina Pachak gives quick relief from stomach, Gas and indigestion. It's a trusted fast action remedy for stomach disorders. Pudina Pachak is completely natural and safe.

**Dosage :** 1 soft gelatin capsule with a glass of water.

<b>Presentations :</b>	<b>US \$</b>
10's Pack	0.22 \$

**PUDINA PACHAK-LIQUID**

**Compositions :** Pudina ka Satva

**Indications :** Pudina Pachak gives quick relief from stomach, gas and indigestion. It's a trusted fast action remedy for stomach disorders. Pudina Pachak is completely natural and safe.

**Dosage :** 1 soft gelatin capsule with a glass of water.

<b>Presentations :</b>	<b>US \$</b>
10 ml	0.25 \$
30 ml	0.60 \$

**PUDINA PACHK ACIDOG**

**Compositions :** Blend of mint oils.

**Indications :** Pudina Pachak-AcidoG for quick relief from gas and acidity. Completely natural, herbal and safe. And reinforced with the extra goodness of mint (Pudina) for instant actions conditions of flatulence.

**Dosage :** 1 soft gelatin capsule with a glass of water.

<b>Presentations :</b>	<b>US \$</b>
5 gms. Sachet	0.18 \$

**RENOLIN POWDER (KIDNEY POWDER)**

**Each 400 gm. contains :**

Vasa (Adhatoda vasica) .....	148 gm
Haridra (Curcuma longa) .....	50 gm
Bow rasa (Archetto (musica)) .....	25 gm
Halite (Natrium) .....	25 gm
Sodium bicarbonate (Natron) .....	145 gm
Magnesium stearate (Dryer) .....	q.s.

**Indications :** Useful in all kinds of Kidney diseases.

**Dosage :** 2 at a time, 3 times a day; Adults: 2 spoons with water at a time, 3 times a day, or as directed by the Physician.

<b>Presentations :</b>	<b>US \$</b>
400 gm.	14.22 \$

**RENOLIN CAPSULES (KIDNEY CAPSULE)**

**Each 500 mg contains :**

Vasa (Adhatoda vasica) .....	165 gm
Haridra (Curcuma longa) .....	25 gm
Bow rasa (Archetto (musica)) .....	25 gm
Halite (Natrium) .....	140 gm
Sodium bicarbonate (Natron) .....	145 gm
Magnesium stearate (Dryer) .....	q.s.

**Indications :** Useful in all kinds of Kidney diseases.

**Dosage :** 2 Capsule at a time, 3 times a day or as directed by the Physician.

<b>Presentations :</b>	<b>US \$</b>
90 Caps.	9.78 \$

**RENOLIN SYRUP (KIDNEY SYRUP)**

**Each 100 ml. contains :**

\*Aqueous extract derived from:

Vasa (Adhatoda vasica) .....	25 gm
Haridra (Curcuma longa) .....	5 gm
Bow rasa (Archetto (musica)) .....	5 gm
Halite (Natrium) .....	30 gm
Sodium bicarbonate (Natron) .....	20 gm
Magnesium stearate (Dryer) .....	q.s.

**Indications :** Useful in all kinds of Kidney diseases.

**Dosage :** Children 2-12 yrs.: 1 spoon with water at a time, 3 times a day.

Adults: 2 spoons with water at a time, 3 times a day, or as directed by the Physician.

<b>Presentations :</b>	<b>US \$</b>
100 ml. bottle	3.43 \$

**SPEED ENERGY**

**Each 500 mg. capsule contains:**

Ashwagandha Ext. (Withania somnifera) .....	70 mg
Kapikachxhu Ext. (Mucuna pruriens) .....	70 mg
Shatavari Ext. (Asparagus racemosus) .....	30 mg
Vidarikanda Ext. (Puraria tuberosa) .....	20 mg
Shwet Musali (Asparagus adscendens) .....	25 mg
Jatiphal (Myristica fragrance) .....	50 mg
Keshar (Crocus sativus) .....	10 mg
Akarakarabh (Anacyclus pyrethrum) .....	20 mg
Baras Kapok (Cinnamomum camphora) .....	5 mg
Kuchala Purified (Strychnos nuxvomica) .....	40 mg
Shakravallabha Ras (Strychnos nuxvomica) .....	100 mg

**Indications :** Erectile disorders of male. It is also useful to Promote sexual performance. Some of the ingredients are known to strengthen the body system.


**Dosage :** 1 capsule twice a day with milk or as directed by the Physician.

<b>Presentations :</b>	<b>US \$</b>
10 Capsule	1.75 \$

**SPEED ENERGY GOLD**

**Each capsule contains:**

Hilajeet Purified (Asphalt) .....	250 mg
Ashwagandha Ext. (Withania somnifera) .....	150 mg



**Stomoco Care**  
Quick Relief from Constipation

Stomoco Care – the Isabgol based powdered laxative for relief from constipation. It is a specially formulated, triple refined mixture of Isabgol and select adjuvants. That is completely free of effervescent and other harmful chemicals, and balanced to reduce salt content.

*Powdered Isabgol (Plantago ovata) husk powder Dextrose*

Regular 100 gm (Rs. 20.00)
100 gm (Rs. 20.00)
200 gm (Rs. 40.00)
375 gm (Rs. 108.00)



**HITO-EN** Cyproheptadine Hydrochloride Syrup IP

Hito lao.....  
Height badao....  
Extra Growth ensured

हाइटो-ईएन  
सिरप

• Product • Compositions • Indications • Dosage • Contents

Rasayan Churna Ext .....100 mg

**Indications :** General debility, Fatigue, General run down Condition, Leg cramps and nervine disorders. It is also Indicated in diabetic neuritis.

**Dosage :** 1 capsule twice a day with milk.

<b>Presentation :</b>	<b>US \$</b>
10 Caps	2.40 \$
30 Caps	6.65 \$

**STOMOCO CARE**

**Each 100 gm. contains:**

Isabgol .....	25%
Senna .....	20%
Erand Bhris .....	q.s
Haritaki .....	20%
Nishot .....	10%
Sonth .....	10%
Sanchal .....	5%
Saunf .....	5%
Amchur .....	5%

**Indications:** Ayurvedic Proprietary Medicine Complete relief Constipation as well as Gas. Stomoco Care Double Action is a unique combination of Isbgol with Trifala and Ajwain, sabgol along with Trifala Gives you complete relief from constipation and Ajwain gives our relief from gas.

**Dosage :** 1 to 2 teaspoonst at bedtime for adults and children Above 12 years or as directed by the physician.

<b>Presentations :</b>	<b>US \$</b>
100 gms	0.84 \$
200 gms	1.40 \$
375 gms	2.35 \$

**STONE MINE CAPSULES**

**Each capsule contains :**

*Aqueous extracts derived from:	
Gokshur (Tribulus terrestris) .....	1 gm
Punarnava (Boerhavia diffusa) .....	500 mg
Pashanbhed (Saxifraga lingulata) .....	500 mg
Varun (Crataeva nurvala) .....	250 mg
Shunthi (Zingiber officinalis) .....	50mg
Kababchini (Piper cubeba) .....	125 mg
Shilajeet Shuddh (Pure Bitumen) .....	30 mg
Hazarul Yahud Pishti .....	60 mg
Shwet Parpati .....	25 mg

**Indication :** Urinary Calculus, Dysuria during prostatic Enlargement, and urinary tract infection in cystitis.

**Dosage :** 1-2 capsule twice a day.

<b>Presentations :</b>	<b>US \$</b>
30 Caps.	1.45 \$

**TAJ HAIR CARE**

**Compositions :** Heena, Mahandi, Brahmi, Awala, Bhringraj, Ritha, Shikakai and others.

**Dosage:** Use regularly

**Indications :** For Hair Conditioner

<b>Presentations:</b>	<b>US \$</b>
Twin Pack	0.12 \$

**TAJ HAIR CONDITIONER**

**Compositions :** Heena, Mehandi, Brahmi, Awala, Bhringraj, Ritha, Shikakai and others.

**Indications :** Hair Tonic (M/F)

<b>Presenations :</b>	<b>US \$</b>
50 gm	1.09 \$
200 gm	3.82 \$

**TAJ GLUCOSE-D**

**Compositions:**

Nutritional Value (Approx. ) per service .....	100 g
Dextrose Monohydrate mn .....	99 g
Calcium .....	170 mg
Phosphate .....	100 mg
Vitamin D .....	300 I.U.
Energy Value .....	360 kcal

**Indications :** Get a jump start on your day by filling up with the Extra energy of Taj Glucose-D. It's ready source of energy to Fight tiredness and refresh you instantly.

**Dosage :** Add heaped teaspoonful (35 g.) of Glucose D to a glass of water (200 ml.)

<b>Presentations :</b>	<b>US \$</b>
100 gm	0.39 \$
200 gm	0.75 \$
500 gm	1.85 \$

**TAJ GLUCOSE-C**

Nutritional Value (Approx.) per service .....	100 g
Dextrose Monohydrate mn.....	99 g
Calcium .....	170 mg
Phosphate .....	100 mg
Vitamin C .....	300 I.U.
Energy Value .....	360 kcal.

**Indications :** Extra refined, high grade Glucose-C is enriched with the goodness of vitamins C and Calcium for extra quick replenishment of essential Vitamin C and Calcium for extra quick replenishment of essential Vitamins, minerals and body salt.

**Dosage :** Add heaped teaspoonful (35 g.) of Glucose C to a Glass of water (200 ml.)

<b>Presentations :</b>	<b>US \$</b>
100 gm	0.48 \$
200 gm	0.78 \$
500 gm	2.10 \$

**TAJ HONEY**

**Indications :** The purest golden honey collected from freshly Harvested beehives. With the finest flavour. Texture and aroma. Right down to the last drop. Absolutely pure. Natural and with no health and good tasted to your food table.

**Dosage :** Add heaped teaspoonful Taj honey to a Glass of water

<b>Presentations</b>	<b>US \$</b>
Bottle :	
50 gm	0.45 \$
100 gm	0.72 \$
250 gm	1.61 \$
500 gm	2.52 \$
1kg	4.55 \$

**TAJ SHAKTIMAN**

Nutritional Value (Approx.) per service .....	100 g
Dextrose Monohydrate mn .....	99 g
Calcium .....	170 mg
Phosphate .....	100 mg
Vitamin D .....	300 I.U.
Energy Value .....	360 kcal

**Indications :** Extra refined, high grade Glucose-D is enriched with the Goodness of Vitamin D and Calcium for extra quick replenishment of essential Vitamins, minerals and body salt.

**Dosage :** Add heaped teaspoonful (35 g.) of Glucose D to a glass of water (200 ml.).

<b>Presentations:</b>	<b>US \$</b>
200 gm	1.08 \$



# Artemotial™

## ANTI-MALARIA INJECTION

Arachis Oil Injection  $\alpha$ - $\beta$  Arteether  
150 mg/2ml.

• Product • Compositions • Indications • Dosage • Contents

500 gm 2.53 \$

### THYRIN POWDER (THYROID POWDER)

Each 400 gm. contains :

Vasa (Adhatoda vasica).....	148 gm
Tulsi (Ocimum sanctum).....	67 gm
Jambolan (Eugenia jambolana).....	45 gm
Bow rasa (Archetto (musical)).....	45 gm
Halite (Natrium).....	67 gm
Sodium bicarbonate (Natron).....	76 gm
Magnesium stearate (Dryer) .....	q.s.

**Indications :** Useful in all kinds of Thyroid diseases

**Dosage :** 2 spoons at time, 3 times a day or as directed by the physician.

<b>Presentations :</b>	<b>US \$</b>
100 ml.	7.50 \$

### THYRIN CAPSULES (THYROID CAPSULES)

Each 500 mg. contains :

Vasa (Adhatoda vasica).....	165 mg
Tulsi (Ocimum sanctum).....	75 mg
Jambolan (Eugenia jambolana).....	50 mg
Bow rasa (Archetto (musical)).....	50 mg
Halite (Natrium).....	75 mg
Sodium bicarbonate (Natron).....	85 mg
Magnesium stearate (Dryer) .....	q.s.

**Indications :** Useful in all kinds of Thyroid diseases.

**Dosage :** 2 capsules 3 times a day or as directed by the physician.

<b>Presentations :</b>	<b>US \$</b>
90 Caps.	3.95 \$

### THYRIN SYRUP (THYROID SYRUP)

Each 100 ml contains :

Vasa (Adhatoda vasica).....	16 mg
Tulsi (Ocimum sanctum) .....	75 mg
Jambolan (Eugenia jambolana) .....	50 mg
Bow rasa (Archetto (musical) .....	50 mg
Halite (Natrium) .....	75 mg
Sodium bicarbonate (Natron).....	85 mg
Magnesium stearate (Dryer).....	q.s.

**Indications :** Useful in all kinds of Thyroid diseases.

**Dosage :** 2 Spoons, 3 times a day or as directed by the physician.

<b>Presentations :</b>	<b>US \$</b>
100 ml	3.15 \$

### VAIDICS COUGH GOLI

**Compositions :** Herbal Cough Lozenges

**Indications :** For Cough & Cold.

**Dosage :** One goli at a time & three times in a day

<b>Presentations :</b>	<b>US \$</b>
100 tablets Package	1.60 \$

## O.T.C. PRODUCTS

### BOROZEN PLUS

**Compositions :** Niacinamide (Vitamin B3), Titanium Dioxide, Hydrolyzed milk protein.

**Indications :** Fair & beautiful fairness cream with UVA/B Protection. Fair & beautiful enhances sun protection with sun screening agents.

**Dosage :** Massage into your skin with gentle upward strokes. For best results apply twice a day.

<b>Presentations :</b>	<b>US \$</b>
19 gm	0.36 \$

### CHYAWANPRASH (SUGAR FREE)

**Compositions :** Bael Chal, Ami, Arloo, Gambhari, Patia, Pipli, Sthalparni, Prishanparni, Choti Kateri, Jeewanti, Agar, Giloya, Muneka, Bala Pachang, Adusamool, Pushkarmool, Maspami, Mugdhparni, Gokhru, Vidarikand, Harad, Kakra Singhi, Kamalgate, Barahi Kand, Kachur, Kakoli, Shirkakoli, Maida, Mahmaida, Jeevak, Rishbhak, Shridhi, Vridhi, Punemavamool, Nagarmotha, Bhoomi Amla, Kaknasa, Choti, Elaichi, Safed Chandan, Ashwangandha, Nagkesar, Tej Pat, Dal Chini, Bansh Lotion, Chini, Amla Pithi, Ghee.

**Usage :** Chayawanprash has a tangy sweet-sour taste and the consistency of jam. It can be taken directly or in milk and as bread spread. In all cases it's therapeutic properties have proven to remain stable and active.

**Dosage :** 1-2 teaspoonful.

<b>Presentations:</b>	<b>US \$</b>
250 gm	0.25 \$
500 gm	4.15 \$
1 kg	7.65 \$

### DEEP RELIEF

**Compositions :**

Peppermint ka Phool .....	15%
Wintergreen Oil .....	10%
Nilgiri Tel .....	10%
Base .....	q.s.

**Indications :** Provides quick relief from headache, colds sprain and muscular pain.

**Dosage :** Use for 3-4 times in a day.

<b>Presentations :</b>	<b>US \$</b>
40 gm	0.75 \$

### Dr. DENTIST MOUTH WASH

**Composition:**

Chlorhexidine Gluconate 0.2% w/v

**Dosage:** Remove cap and squeeze until the 10 ml dispenser filled

**Indication:** This is indicated for irritating & bad smell.

<b>Presentations :</b>	<b>US \$</b>
250ml	1.52 \$

### IOMAX

**Compositions:**

Peppermint ka Phool .....	15%
Wintergreen Oil .....	10%
Nilgiri Tel .....	10%
Base .....	q.s.

**Indications :** Provides quick relief from headache, colds sprain and muscular pain.

**Dosage :** use 2 or 3 times at the time of pan

<b>Presentations :</b>	<b>US \$</b>
10 gm	0.59 \$

### KRANK CREAM

**Compositions :** Clotrimazole, Menthol, Zinc Oxide, Creambase,

**Indications :** For Cracks.

**Dosage :** use regularly till 30 days

<b>Presentations :</b>	<b>US \$</b>
25 gm	0.70 \$

### LIFECARE DRY FRUIT POWDER

**Compositions :** Bail Powder

**Indications :** For heart tonic.

**Dosage :** As offered as neede

People who are sleep deprived are often irritable.

**Diazepam Tablets IP 5 / 10 mg**

**SilPrex-5™**

**Diazepam is used to relieve anxiety, muscle spasms, and seizures and to control agitation caused by alcohol withdrawal.**



• Product • Compositions • Indications • Dosage • Contents

<b>Presentations :</b>	<b>US \$</b>
200 gm	0.65 \$
500 gm	1.35 \$

**LOOK'S BODY LOTION**

**Composition :** Jasat Basma, Tankan Amla, Milk Cream, Surasar (Alcohol base), Aloe Vera and Vaseline.

**Indications :** For cures skin infections.

**Dosage :** Used regularly for protection the body.

<b>Presentations :</b>	<b>US \$</b>
300 ml	1.68 \$

**LOOK'S FAIRNESS CREAM**

**Compositions :** Aqua, Benyan, Barberry, Cetyl Alcohol, Curculigo, Carbopol 940, Glycerine, Perfume, Turmeric, Vetiver..

**Indications :** Adds glow to the skin, maintain oil balance.

**Dosage :** Used regularly .

<b>Presentations :</b>	<b>US \$</b>
25 gm	0.61 \$
50 gm	1.14 \$

**LOOK'S SCRUB**

**Compositions:** Cream + Accelerator + Glycerine with Aloe Vera

**Indications :** Acts as an Antiseptic.

**Dosage:** Use two time at a week.

<b>Presentations :</b>	<b>US \$</b>
100 gm	1.80 \$

**LOOK'S MASSAGER**

**Compositions :** Acacia Catechu, Albizzia Labbeck Piper Nigrum.

**Indications :** For improve blood presure.

**Dosage:** Use two time at a week.

<b>Presentations :</b>	<b>US \$</b>
100 ml	1.63 \$

**LOOK'S HAIR FORMULA PACK**

**Compositions :** Heena, Mehandi, Brahmi, Awala, Bhringraj, Ritha, Shikakai, Nagarmotha, Jaswand, Anar, Ratanjyot, Nim, Lemon, Methi, Katta, Orange, Shitafal, Sarso, Coffee, Nilgiri, Black Til, Erand, Kapoor.

**Indications :** White Hairs, Dandruffs, Insomania, All types of Hair Problems

**Use :-**

a) For black hairs, mix this pack with fresh butter milk & lever it for 24 hrs. then apply on hairs.

b) For other problems mix with fresh butter milk & rest it if or 6 to 8 hrs. Then apply on hairs.

**Dosage:** Used once time in a week

<b>Presentations :</b>	<b>US \$</b>
100 gm	1.92 \$

**LOOK'S SHAVING CREAM**

**Compositions :** Look's Shaving Cream which helps your razor slide across you skin for a smooth shaving.

**Indications :** For feather touch.

**Dosage:** As offered when needed.

<b>Presentations :</b>	<b>US \$</b>
40 gm	0.65 \$
70 gm	1.00 \$

**LOOK'S AFTER SHAVING LOTION**

**Compositions :** Na Soap, K Soap, Glycerin, Colour Perfumes. Preservative.

**Indications :** As Antiseptic lotion.

**Dosage:** As offered when needed.

<b>Presentations :</b>	<b>US \$</b>
100 ml	2.21 \$

**LOOK'S HAIR DYE**

**Compositions :** Aqua/Water, Cetearyl , Alcohol, Deceth, Propylene Glycol, Laureth, Oleth-30, Ammonium Hydroxide, Lauric Acid, Hexadimethrine Chloride, Glycol Distarate Resorcinol, ethanol.

**Indications :** Controls hair fall.

**Dosage:** As offered when needed.

<b>Presentations :</b>	<b>US \$</b>
5 ml	0.13 \$
100 ml	2.06 \$

**LOOK'S HAIR DYE (NATURAL BLACK)**

**Compositions :** Aqua/Water, Cetearyl , Alcohol, Deceth, Propylene Glycol, Laureth, Oleth-30, Ammonium Hydroxide, Lauric Acid, Hexadimethrine Chloride, Glycol Distarate Resorcinol, ethanolamine, Polyquaternium-22, Dimethicone.

**Indications :** Give a dark tinge to the hair.

**Dosage:** As offered when needed.

<b>Presentations:</b>	<b>US \$</b>
5 ml	0.18 \$
100 ml	2.51 \$

**LOOK'S MEHANDI**

**Compositions :** Aqua/Water, Cetearyl, Alcohol, Deceth, Propylene Glycol, Laureth, Oleth-30, Ammonium Hydroxide, Lauric Acid, Hexadimethrine Chloride, Glycol Distarate Resorcinol, ethanolamine, Polyquaternium-22, Dimethicone.

**Indications :** natural coolant & thereby relieves headache.

**Dosage:** As offered when needed.

<b>Presentations:</b>	<b>US \$</b>
5 ml	0.13 \$
100 ml	2.14 \$

**LOOK'S TURMERIC CREAM**

**Compositions :** Turmeric, Sandalwood oil, Excipients etc.

**Indications :** For Fair and Beautiful skin.

**Dosage:** Used regularly.

<b>Presentations:</b>	<b>US \$</b>
15 gm	0.63 \$
30 gm	1.08 \$

**LOOK'S HAIR CONDITIONER SHAMPOO**

**Compositions :** Heena, Mehandi, Neem, Ritha, Protein and others.

**Indications :** Beauty secret for hair, clears dandruff.

**Dosage:** Use two time at a week.

<b>Presentations :</b>	<b>US \$</b>
50 ml	0.66 \$
175ml	1.84 \$

**LOOK'S BLEACH**

**Compositions :** Cream 25% + Acceclerator 7% + Aloe Vera.

**Indications :** Acts as an Antiseptic.

**Dosage:** Use one time at a month.

<b>Presentations :</b>	<b>US \$</b>
28 gm	1.05 \$



# “ Lo Pax Karo Relax ”

## The easy way to fight fever EVER

• Product • Compositions • Indications • Dosage • Contents

<p><b>LADY LOOK'S</b>  <b>Compositions :</b> Each 100 ml. Contains            Kumkumadi Taila 20 ml., Asanamanjistadi Taila 80 ml.  <b>Indications :</b> For Fair and Beautiful Skin  <b>Dosage:</b> Used regularly.  <b>Presentations :</b> <span style="float:right">US \$</span>            55 gm <span style="float:right">1.85 \$</span></p>	<p>100 ml <span style="float:right">0.96 \$</span></p>
<p><b>LOOK'S HAIR OIL</b>  <b>Compositions :</b> Herbal Proteins, neem &amp; Tulsi leaves.  <b>Indications :</b> Provides new life to hair strands.  <b>Dosage:</b> Use two time at a week.  <b>Presentations :</b> <span style="float:right">US \$</span>            100 ml <span style="float:right">1.45 \$</span></p>	<p><b>LOOK'S ANTI DANDRUFF OIL</b>  <b>Each 100 ml. is prepared out of:</b>            Emblica officinalis ..... 45 g            Glycyrrhiza glabra ..... 45 g            Plongammia plonnata ..... 45 g            Azhadiracta indica..... 15 g            Aloe vera ..... 20 g            Rose sinensis ..... 10g            Moniera cuniefolia ..... 12 g            Eclipta alba ..... 12 g            Cocus nucifera ..... 75 ml            Sesamum indicum ..... 25 ml  <b>Indications :</b> Strengthens hair roots.  <b>Dosage :</b> 15 ml. to be applied on scalp and washed out after half An hour.  <b>Presentations :</b> <span style="float:right">US \$</span>            100 ml <span style="float:right">1.85 \$</span></p>
<p><b>LOOK'S ALL PURPOSE CREAM</b>  <b>Compositions:</b> Turmeric, Sandal Wood oil, Excipients etc.  <b>Indications :</b> Anti dandruff &amp; anti-bacterial.  <b>Dosage:</b> Use regularly.  <b>Presentations :</b> <span style="float:right">US \$</span>            50 gm <span style="float:right">1.50 \$</span></p>	<p><b>LOOK'S TRIPHLA POWDER</b>  <b>Compositions :</b> Talc, Fragrance &amp; Awala, Shikakai, Mehandi, Methika, Brahmi, Brahmi, Bhringraj etc.  <b>Indications :</b> increases bounciness and silkiness of hair.  <b>Dosage:</b> Take one time in a day.  <b>Presentations:</b> <span style="float:right">US \$</span>            100 ml <span style="float:right">0.84 \$</span></p>
<p><b>LOOK'S FACE PACK</b>  <b>Compositions:</b> Active Ingredients.            Aloe Vera, Bearberry Extract, Sodium Lactate.  <b>Indications :</b> Refreshes and rejuvenate the skin.  <b>Dosage:</b> Use two time at a week.  <b>Presentations :</b> <span style="float:right">US \$</span>            125 gm <span style="float:right">1.75 \$</span></p>	<p><b>LOOK'S POWDER (MINT)</b>  <b>Compositions :</b> Talc, Fragrance &amp; Calcium Carbonates with Mint Powder.  <b>Indications :</b> Itching conditions skin.  <b>Dosage:</b> As offered when needed.  <b>Presentations:</b> <span style="float:right">US \$</span>            100 gm <span style="float:right">1.25 \$</span></p>
<p><b>LOOK'S SHAMPOO</b>  <b>Compositions :</b> Borax, Carbopol, Castor oil, Chebulic myrobalan, Coconut monoethanolamide, Eclipta, Emblic, Hemidesmus, Indicus, Henna, Honey, Lemon, Juice, Licorice, Mango, Methyl Paraben, Perfumes.  <b>Indications :</b> Gives hair natural gloss and bounce.  <b>Dosage:</b> Use two time at a week.  <b>Presentations :</b> <span style="float:right">US \$</span>            125 gm <span style="float:right">1.14 \$</span></p>	<p><b>LOOK'S HAIR TONIC</b>  <b>Compositions :</b> Circuma zedoaria, Andropogan tubar, Vilamichu root, Narbostachys tatamansi, Elengi Flower oil Cyorus rotandus, Jasminum angusti folium root, Andropogan citrates, Menthol oil, Amla, Lata kasturi, Camphor.  <b>Indications :</b> Relieves headache &amp; induces sound sleep  <b>Dosage:</b> Used once time in a week  <b>Presentations :</b> <span style="float:right">US \$</span>            60 ml <span style="float:right">1.04 \$</span>            100 ml <span style="float:right">1.85 \$</span></p>
<p><b>LOOK'S HONEY FOR FACE</b>  <b>Compositions :</b> Honey, Glycerine, Aloe Vera &amp; Vaseline.  <b>Indications :</b> Adds glow to the skin.  <b>Dosage:</b> Use regularly.  <b>Presentations :</b> <span style="float:right">US \$</span>            100 ml <span style="float:right">1.41 \$</span></p>	<p><b>LOOK'S AWALA OIL</b>  <b>Compositions :</b> Amla, Almond, Pudina ka phool, Perfume, Vegetables and Mineral oil &amp; etc.  <b>Indications :</b> Strengthens hair roots  <b>Dosage:</b> Used once time in a week  <b>Presentations:</b> <span style="float:right">US \$</span>            60 ml <span style="float:right">0.29 \$</span>            200 ml <span style="float:right">0.85 \$</span></p>
<p><b>LOOK'S AWALA SHIKAKAI SHAMPOO</b>  <b>Compositions :</b> Each 100 ml.contains            Awala, Shikakai, Mehandi, Methika, Brahmi, Brahmi, Bhringraj etc.  <b>Indications :</b> increases bounciness and silkiness of hair  <b>Dosage:</b> Use one time at a week.  <b>Presentations :</b> <span style="float:right">US \$</span></p>	<p><b>LOOK'S HAIR DYE (BROWN COLOUR)</b>  <b>Compositions :</b> Aqua/Water, Cetearyl , Alcohol, Deceth, Propylene Glycol, Laureth, Oleth-30, Ammonium Hydroxide, Lauric Acid, Hexadimethrine Chloride, Glycol Distarate Resorcinol, ethanolamine, Polyquaternium-22, Dimethicone.  <b>Indications :</b> Helps colour and conditioner the hair naturally.  <b>Dosage:</b> As offered when needed.  <b>Presentations:</b> <span style="float:right">US \$</span>            5 ml <span style="float:right">0.18 \$</span>            100 ml <span style="float:right">2.26 \$</span></p>
<p><b>LOOK'S AWALA SHIKAKAI SHAMPOO</b>  <b>Compositions :</b> Each 100 ml.contains            Awala, Shikakai, Mehandi, Methika, Brahmi, Brahmi, Bhringraj etc.  <b>Indications :</b> increases bounciness and silkiness of hair  <b>Dosage:</b> Use one time at a week.  <b>Presentations :</b> <span style="float:right">US \$</span></p>	<p><b>LOOK'S MUD PACK</b>  <b>Compositions :</b> Multani Mitti.  <b>Indications :</b> Makes skin soft &amp; smooth  <b>Dosage:</b> Used two time at a week.</p>

# Albendazole 400 mg

# Zentic™ kills worms

treatments for threadworm

one tablet - once! for each family member  
no dosage calculations required

● Product ● Compositions ● Indications ● Dosage ● Contents

**Presentations:** US \$  
100 gm 0.29 \$

**LOOK'S MUD PACK WITH NEEM**

**Compositions :** Multani Mitti, Neem.  
**Indications :** Removes acne, spots & cures prickly heat.  
**Dosage:** Used two time at a week.

**Presentations:** US \$  
100 gm 0.36 \$

**LOOK'S MUD PACK WITH HERBAL**

**Compositions :** Multani Mitti  
**Indications :** Improves blood circulation and adds glow to the skin.  
**Dosage:** Used two time at a week.

**Presentations:** US \$  
100 gm 0.36 \$

**LOOK'S MUD PACK WITH ORANGE**

**Compositions :** Multani Mitti.  
**Indications :** Natural astringent and skin toner  
**Dosage:** Used two time at a week.

**Presentations:** US \$  
100 gm 0.36 \$

**LOOK'S SKIN OIL**

**Compositions :** Acacia catechu, Albizzia lebbek, Piper nigrum.  
**Indications :** Maintains natural oil balance  
**Dosage:** Used one time at a week.

**Presentations:** US \$  
60g ml 2.87 \$

**NOZOL MINT**

**Each 1 ml. contains :**  
Pudina kaool.....40%  
Kapoor.....40%  
Winter Green Oil.....14%  
Nilgiri.....06%

**Indications :** Clears your stuffy nose fast when you inhale medicated vapours through nostril to enable you to make breathing cool, clean & comfortable.

**Dosage :** As offered when needed

**Presentations :** US \$  
1 PC 0.24 \$

**NOZOL ICY COOL**

**Compositons :**  
**Each 1 ml. contains :**  
Pudina ka phool.....40%  
Kapoor.....40%  
Winter Green Oil.....14%  
Nilgiri.....06%

**Indications :** Clears your stuffy nose fast when you inhale medicated vapours through nostril to enable you to make breathing cool, clean & comfortable.

**Dosage :** As offered when needed

**Presentations :** US \$  
1 PC 0.36 \$

**TAJ DIABA SWEETEX (HERBAL)**

**30 ml. contents extract of :**  
Asparagus race mosus .....100 gm  
Terminalia Chebula .....50 gm  
Tinospora Cordifolia.....50 gm

Glyshriza Glabra.....100 mg  
Ext. of Stevia Leaves Zero Calories Sweetener agent .q.s.

**Indications :** With herbal extract less calories sweetness recommended for diabetic patients & the individual.

**Dosage :** Use 2-3 drops or as much as you require sweetness.

**Presentations :** US \$  
10 ml 1.08 \$  
50 ml 5.15 \$

**TAJ LIPGUARD**

**Compositions :** Vaseline + Vegetarian oil.

**Indications :** Moisture Cream

**Dosage :** As offered when needs

**Presentations :** US \$  
4 gm 0.13 \$  
15 gm 0.60 \$

**TAJ HERBAL TEA**

**Each 50 gm. contains:**

Rakt Chandan (Pterocarpus San Talinus).....6 g  
Tulsi (Ocimum Sanctum) ..... 6 g  
Hansh Raj (Adiantum Lunulatum) ..... 6 g  
Brahmi (Centalla Aciatica) ..... 6 g  
Hoph (Foeniculum Vulgare) ..... 6 g  
Kulinjan (Alpinia Galanga) ..... 6 g  
Mullaithi (Glycyrrhiza Glabra). ..... 4 g  
Elayachi (Cinnamomum Zeylenicum). ..... 4 g  
Dal Chini (Cinnamomum Zeylenicum). ..... 2 g  
Banfasha (Viola odorata linn). ..... 2 g  
Lavang (Caryophyllus Aromaticum) ..... 1 g  
Tejpatra (Cinna momum Tamola) ..... 3 g

**Indications :** It cures cold, cough and fever. It make a person active, Energetic and is refreshing, provides vigour and vitality, imprives digestion removes constipation.

**Descriptions:** This special herbal blend relaxes the nervous System and cleanses the digestive and circulatory systems. It is especially beneficial for colds, coughs, and asthma & Chest infections. A very good alternative for those addicted to black tea and coffee. It is absolutely caffeine free and hence very beneficial with no side effects.

**Dosage :** Boil 3/4th cup of water and add half teaspoon tea to it, Add milk and sugar as per taste, strain and drink.

**Presentations :** US \$  
50 gm 1.15 \$  
100 gm 2.28 \$

**TAJ ITCHUK GUARD**

**Compositions :** Clotrimazole, menthol, Zinc Oxide, Cream base

**Indications :** Taj itchak Guard providers a powerful 4-way action, for quick relief from and dry itch skin conditions. Taj Itchak Guard is an anti-microbial that provides instant pain relief. Soothes the skin and leaves no scars.

**Dosage :** 2 or 3 times daily.

Herbal care for  
all kind of  
Cough & Cold

EFFECTIVE COUGH SYRUP WITH  
HARA TULSI & VASA  
AYURVEDIC COUGH SYRUP

Rs. 15/-  
50 ml.  
Rs. 28.70  
100 ml.

KALI TULSI  
KADHA

Diolofenac, Linseed Oil, Methyl Salicylate & Menthol Gel

# DEEP RELIEF™

FAST ACTION

Maximum Strength

डीप रीलिफ



• Product • Compositions • Indications • Dosage • Contents

<b>Presentations:</b>	<b>US \$</b>
12 gm	0.24 \$
25 gm	0.53 \$

### TAJ MUGAL-E-AJAM SHARBAT

**Compositions :** Mixture of various juices.

**Indications :** Soft Drink

**Dosage :** As offered when needed

<b>Presentations :</b>	<b>US \$</b>
500 ml	1.44 \$
750 ml	2.00 \$

### TRISHUL BALM

**Compositions:**

Peppermint ka Phool .....	15%
Wintergreen Oil .....	10%
Nilgiri Tel .....	10%
Base .....	q.s.

**Indications :** Provides quick relief from headache, colds sprain and muscular pain.

**Dosage :** As offered when needed

<b>Presentations :</b>	<b>US \$</b>
5 gm	0.13 \$
10 gm	0.24 \$
30 gm	0.67 \$

### TAJ LAL TEL

**Compositions :** Clotrimazole, Methol, Zinc oxide, Cream base

**Indications :** Taj Lal Tail, a baby massage oil containing strengthening herbs to Make the baby's bones and muscles strong to aid him reach milestones faster.

**Dosage:** Used regularly upto 2 year's of age

<b>Presentations :</b>	<b>US \$</b>
60 ml	0.60 \$
120 ml	1.08 \$
200 ml	1.56 \$

### VAIDIC BALM

**Compositions:**

Peppermint ka Phool .....	15%
Wintergreen Oil .....	10%
Nilgiri Tel .....	10%
Base .....	q.s.

**Indications :** Provides quick relief from headache, colds sprain and muscular pain.

**Dosage :** As offered when needed

<b>Presentations :</b>	<b>US \$</b>
5 gm	0.13 \$
10 gm	0.48 \$
30 gm	0.67 \$

### VATSALYA GRIPE WATER / WINGARD'S

(Two Trade Name)

**Compositions :** Anjir, Kishmish, Sauf, Ajwain, Honey.

**Indications & Usage :** Taj Gripe water keeps baby healthy by improving digestion & curing stomach ailments.

**Dosage :** 3 times a days.

<b>Presentations :</b>	<b>US \$</b>
30 ml	0.24 \$
60 ml	0.48 \$
125 ml	0.78 \$

## NUTRACEUTICALS PRODUCTS

### SAIZEN BABY MILK POWDER

**Combination of growth hormones**

**Dosage :** As per the Physician's advice

**Indication:** Provides special nutrients found in breast milk that are important for mental and visual development.

<b>Presentations :</b>	<b>US \$</b>
200gm	2.28 \$
500 gm	5.03 \$

New coming

### DAIRYMAN INFANT MILK POWDER

**Composition:**

Milk Proteins .....	22%
Milk Fat .....	18%
<b>Carbohydrates :</b>	
Lactose .....	32%
Sucrose .....	18%

**INFANT MILK FOOD** is made from partially skimmed milk, sugar, minerals and vitamins.

**Special Features:** Product formulated on guidelines set by Codex Commission of WHO/FAO. Marketed in India since last 2.5 years.

<b>Presentations :</b>	<b>MRP</b>	<b>Retailer</b>	<b>Stockist</b>
------------------------	------------	-----------------	-----------------

### DAIRYMAN INSTANT FULL CREAM MILK POWDER

**Composition:**

Milk Fat .....	26% to 28%
Protein .....	26%
Carbohydrates .....	37%
Minerals .....	6%
Moisture .....	3%

**Special Features:** The product has more milk fat as compared to normal milk powders. It is packed under an atmosphere of Nitrogen. The product is creamy white in colour. Marketed in India since last 3 decades.

<b>Presentations :</b>	<b>MRP</b>	<b>Retailer</b>	<b>Stockist</b>
------------------------	------------	-----------------	-----------------

### DAIRYMAN DAIRY WHITENER

**Composition:**

Milk Fat .....	20%
Milk Protein .....	21%
<b>Carbohydrates :</b>	
Lactose .....	33%
Sugar .....	18%
Minerals .....	5%
Moisture .....	3%

**Special Features:** Packed under an atmosphere of Nitrogen, has excellent natural miscibility (without the use of lecithin), has a fine granular texture. A convenient alternative to condensed milk.

<b>Presentations :</b>	<b>MRP</b>	<b>Retailer</b>	<b>Stockist</b>
------------------------	------------	-----------------	-----------------

### LACTOVITE

**Combination of lactose and sugar**

**Dosage :** As per the Physician's advice

**Indication:** Lactovite caplets is indicated for prophylactic or therapeutic conditions

<b>Presentations :</b>	<b>US \$</b>
200gm	2.28 \$
500 gm	5.03 \$

# For Termination of Undesired Pregnancy

## MIFEBORT™ + MISOBORT™

Mifepristone Tablets 200 mg

Misoprostol 200 mcg Tablet

Mifebort (Mifepristone) blocks receptor of progesterone, a key hormone in establishing and maintaining a pregnancy.

Misobort (Misoprostol) a synthetic prostaglandin E1 analog that causes uterine contractions and bleeding.



### MIFEBORT

**Day One :**

Three 200 mg tablets (600 mg.) of Mifebort are taken in single oral dose.

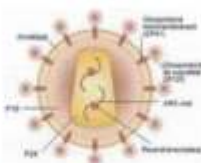
### MISOBORT

**Day Three :**

Two days after ingesting Misobort patient should take two 200 mcg tables (400 mcg) of Misobort orally.

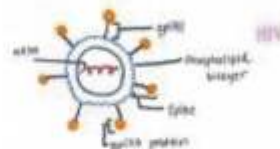


# THE ABORTION PILL....



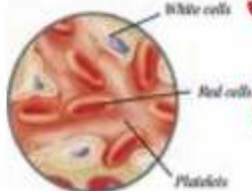
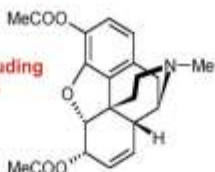
# HIV PRODUCTS

(First Lunch in India)



## New HIV / AIDS products range

Diseases including HIV AIDS



New Single-Day  
**DECTROVIR**  
Lamivudine 150 mg / Zidovudine USP 300 mg

**Lamovir-S™**  
(Stavudine 30 mg / Lamivudine 150 mg)

**DECTROVIR-N**  
Lamivudine 150 mg / Zidovudine USP 300 mg / Nevirapine 200 mg

**TRIAMUNE™**  
Nevirapine 200 mg / Lamivudine 150 mg / Stavudine 30 mg

## COMPLETE TREATMENT FOR TUBERCULOSIS

### TRIP™

Rifampicin 450mg INH 150mg  
Ethambutol 800 Mg. Combi-pack



### TRIP-Max™

Rifampicin 450mg INH 150mg,  
Pyrazinamide-1500 mg. & Ethambutol 800 Mg.  
Combi-pack

### TRIP-Mini™

Rifampicin 100mg, INH 50mg,  
& Pyrazinamide-300 mg. Combi-pack

Eradicate Tuberculosis with  
**I Combi-Pack.**

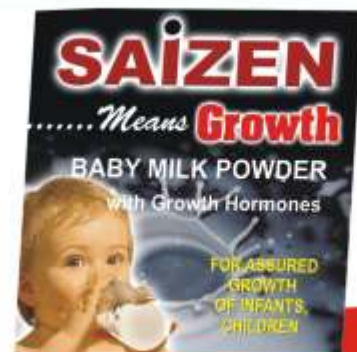
## Calcium & Vitamin D<sub>3</sub> Tablets **BONYCAL®**

A Taj Pharmaceuticals Brand

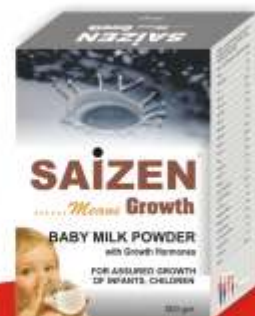
Composition :  
Vitamin D3 +  
Calcium carbon



हड्डियों में डाले शक्ति  
आप करें मस्ती



Symptomatic relief of perennial and seasonal allergic rhinitis, vasomotor rhinitis, allergic conjunctivitis; amelioration of allergic reactions to blood or plasma; management of allergic pruritic symptoms, mild skin manifestations of uncomplicated urticaria and angioedema, and cold urticaria; dermographism; adjunctive anaphylactic therapy.



# TAJ PHARMA

## CITY INDIA



### Overview of the Project:

This is the most glorious moment of our company as we are establishing first ever Pharma city (a division of Taj Pharmaceuticals Ltd.) in the whole world that will consist all the manufacturing facilities within the same campus. Our company has felt that most of the pharmaceuticals companies in India dissipate lot of time in outsourcing different types of products from the different manufactures of India, and so far there are no facilities in world available where you can manufacture most the products within the same campus.

The Indian pharmaceutical sector has come a long way, from being almost non existence during the 1970s to a prominent provider of health care products, meeting almost 90 per cent of country's pharmaceutical needs today. The total Indian market at present is valued at about US\$6.4 billion and is expected to grow to US\$25 billion by 210.

Taj Pharmaceutical Limited Mega Project is approved by USA - FDA , MCA - FDA (Britain) & WHO - GMP. Scheduled 'M' certified by the Government of India

So, this Prominent Industry will be sure going to prove golden swan of the Indian economy.

### Silent features of Taj Pharmacy:

A)That, it will consist World class Tablet Manufacturing plant/ Capsule Manufacturing Plant/ Soft Gelling Plant/Cosmetic Plant/ Injection Plant/Bio Technology Park etc. and These Plants will offer facilities for manufacturing almost every range of medicines within the same roof. So, that will save the additional costs of the transportation as well as harassment of the marketing company as we will avail above mentioned products portfolio within the same campus in resulting more efficiency of the company's products and their qualities.

B)That, you may manufacture your company's product for the domestic as well as international market as per your packing, quantity and quality Preference

### Supplementary Benefits:

A)That, Taj Pharmacy will organize monthly trade fair within its campus where retailers/stockiest/Marketer etc. can buy consignments of medicines on manufacturing cost. (Conditions Apply)

B)That, Taj Pharmacy will install world class library which will have numerous books for its visitors and staff where they can gain more knowledge about Pharma world. & we will have a 'Guest House' with all the modern amenities which will suit both the Indian as well as foreign associates of our company and stockiest/marketer etc. and you may book that place in advance before visiting the Taj Pharmacy to ensure the availability of place. All the expenses such as food, traveling etc. will be bear by the company.

C)That, we will avail all the technical help and modern technology to those companies who wish to excel or set up manufacturing units in very limited resources where its financial or infrastructure development and with the help of our technology they will able to attain highest growth in manufacturing and marketing with their own limited resources.

### R & D Department:

Our company will have all the modern equipments with world class lab as per the norms of latest scientific guidelines. We will avail various sponsorships, scholarships to the researcher those who wish to excel R & D in Pharmaceuticals Industry We will offer lower cost of R & D Facilities to companies round the globe those who want to pursue their products R & D in our lab.

### Doctor's Corner:

A)That, our company will offer financial help / sponsorships to those doctors who want to excel in R & D department Pharma Industry.

B)That, our company is also availing loans to the doctors for their Homes/Hospitals/Nursing Homes etc. for further details of this scheme you may visit our website: [www.tajfordoctors.com](http://www.tajfordoctors.com) , and you download form from the website and send to us.

### Evaluations of Taj Pharmacy:

Pharma is right now one of the most happening sectors in the economy. The domestic players are competing fiercely with the foreign players. The opportunity is huge and domestic players are gearing up for it. The results will come with time.



**'Taj Pharmacy: A vision that will change the Pharma Market forever.'**





**+** TAJ for Doctors

*Doctors First Choice in India*

Our range of products have been widely appreciated by the medical community and have benefitted lacs of patients...

**WORLDWIDE NO.1 BRAND**



**TAJ PHARMACEUTICALS LTD.**  
Mumbai, INDIA

**Dry Cough Syrup**

**COCOREX\* 50**  
COUGH SYRUP 50 ML.

- ANTI-ALLERGIC
- ANIT-TUSSIVE
- FOR DRY COUGH



कोकोरेक्स सूखा खाँसी के लिए सर्वोत्तम

Aspirin 75mg/150mg + Glycine 37.5/75mg  
**CARDILL®**

CARDILL® is a low dose aspirin that helps prevent blood clotting and reduces the risk of heart attack and stroke in patients with blood vessel disorders. Low dose aspirin helps reduce blood stickiness, the tendency of blood to clot. CARDILL is used to help protect against some of the problems which can be caused by clotting in the blood stream. CARDILL may be useful if you are at risk of coronary artery disease, angina, transient ischaemic attacks (TIAs or mini strokes), stroke (due to a blood clot) or heart attack.

*A safer day & night again*



**FAST SOOTHING**  
A Taj Pharmaceuticals Ltd Brand.  
**PRILOSID™**  
(OMEPRAZOLE CAPSULES) Omeprazole IP 20mg  
**FIGHTING YOUR HEARTBURN**

**Spread the World!**  
Don't keep the good news to yourself. Spread the word about Prilosid.  
The Power to fight frequent heartburn now in your hand.  
Relief from Heartburn & Acid Indigestion  
**प्रीलोसिड®**

**NEW** Energizing with a mug of Kadillac

**Kadillac®**

It has been seen that children in India are not getting enough of these vitamins and minerals from their daily diet. Research shows that these nutrients are very important for school age children for their attention, concentration and memory as well as their physical performance and growth. Thus, Kadillac is a beneficial supplement for children to aid not only their growth, but also enhanced attention and concentration.



Calories 95 (184) Fat 1.2g (4g)  
**INGREDIENTS:** Wheat Flour, Malted Barley, Dried Skimmed Milk, Sugar, Dried Whey, Calcium Carbonate, Hydrogenated Vegetable Fat, Lactose, Sodium Chloride, Potassium Bicarbonate, Milk Proteins, Vitamins (C, Niocin, E, Panthothenic Acid, B6, B2, B1, A, Folic Acid, Biotin, D, B12), Ferric Pyrophosphate, Zinc Oxide.  
Each 25g servomg provides 20% RDA of the vitamins listed and iron, 53% RDA calcium and 16% RDA zinc.



**Pack Format** Jar  
**Pack Sizes** 2 Kg, 800 g., 400 g., 200 g.

**RESTRICTION ON USE:**  
This product is not suitable for babies under 1 year.

# TAJ PHARMA

CITY INDIA

(A division of Taj Pharmaceuticals Ltd.)  
Location : Palghar (Tarapur) Dist : Thane, Maharashtra.



**Taj Pharmaceutical Limited Mega Project is approved by USA - FDA , MCA - FDA (Britain) . TGA - Australia & WHO - Scheduled 'M' certified by the Government of India**

## Manufacturing units

( All types of medicines )

**TABLET PLANT**



**CAPSULE PLANT**



**SYRUP PLANT**



**SOFT GELATIN PLANT**



**COSMETIC PLANT**



**INJECTION PLANT**



**The Total worth of the project will be round about Rs. 535 crores (IC)**

You may manufacture your company's product for the domestic as well as international market as per your packing, quantity and quality preference.

Taj Pharmacy will also organise monthly trade fair within its campus where Stockiest / Retailers etc.

Can buy consignments of medicines on manufacturing cost. (Conditions Apply)

For Details of Project Profile, Pl. Visit our website\*



Regd. Office - 434, Laxmi Plaza, Laxmi Industrial Estate, New Link Road, Andheri (w) Mumbai - 400 053.  
Phone : 91-22-26374592 / 93, 91-22- 30601000, 91-22-30601001. Fax : 022-26341274, Mobile : 09819766682  
E-mail : tajgroup@tajpharmaceuticals.com / tajpharmaceuticals@rediffmail.com  
Website: www.tajpharmaceuticals.com; www.tajfordoctors.com

**Sunday & Saturday Closed**